

TABLE OF CONTENTS

B		9600 Commercial Series Framed Kits.....	19
Barn Door Hardware		9878CS Packaged Sets.....	20
9400 Series Barn Door Packaged Sets.....	36	9800 Heavy Duty Series Framed Kits.....	21
Barn Door Privacy Lock.....	40	9878HD Packaged Sets	22
eConestoga Series Barn Door Hardware.....	39	9901 Packaged Sets.....	23
 Bi-Fold Door Hardware			
9570 Packaged Sets.....	15	S	
9860 Packaged Sets and 9861 Packaged Sets.....	16	Side Mount Selection Chart.....	2
9890 Packaged Sets and 9891 Packaged Sets.....	17		
 By-Pass Door Hardware		W	
9110 Packaged Sets and 9130 Packaged Sets.....	4	Wall Mount 9710 Series	24
9514 Packaged Sets and 9583 Packaged Sets.....	5-6		
9611 Packaged Sets and 9612 Packaged Sets.....	7		
9614 Packaged Sets and 9683 Packaged Sets.....	8-9		
9673 Packaged Sets and 9674 Packaged Sets.....	10		
9675 Packaged Sets and 9676 Packaged Sets.....	11-12		
9875 Packaged Sets.....	13		
9885 Packaged Sets and 9886 Packaged Sets	14		
 C			
Components for 9400 Series Barn Door Hardware	37-38		
Components for Sliding Door Hardware	25-35		
 D			
Door Selection Chart	3		
 H			
How to Order	2		
 P			
Pocket Door Hardware			
9110 Packaged Sets and 9130 Packaged Sets.....	18		



Sliding Door Hardware

GENERAL INFORMATION

Cancellation Notification

Cancellation for made-to-order items must be communicated within 48 hours of order placement.

HOW TO ORDER:

EXAMPLE: 9710 Wall Mount Packaged Set For 1 Door CLA 72"

STOCK NUMBER: 160958

ITEM NUMBER: 9710007200000CLA

Side Mount Selection Chart					
Door thickness	3/4" (19mm)	1" (25.4mm)	1-1/8" (29mm)	1-3/8" (35mm)	1-3/4" (44mm)
Front hanger	B	B	A or B	B	A
Rear hanger	A	A	Same as front	B	B
Door gap	3/4"	1/2"	1 1/16"	9/16"	3/8"
Item #	Description				
Hanger A	9200	Single wheel hanger-offset A			
Hanger B	9201	Single wheel hanger-offset B			
Hanger B	9202	Twin wheel hanger- offset B			

Hanger Mount Selection Example:

Door thickness: 1-1/8"

Door weight: 60 lbs.

Select single, twin or micro cam hanger

Front hanger: 9400

Rear hanger: 9400

Note: Hanger is stamped "A" or "B" for easy identification for consideration for 9514, 9583, 9614, and 9683, by-pass packaged sets located on pages 5, 7 and 10.



Maximum Weight Per Door	Packaged Sets	Description	Parts Bags	Track	Page #
By-Pass					
60#	9514	Aluminum track & hardware for 3/4" - 1-3/8" thick doors.	9814	9810	5
60#	9583	Aluminum track & hardware for 3/4" - 1-3/8" thick doors, for 3 doors.	9814	9810	5
60#	9614	Aluminum track with grooved fascia - hardware for 1-3/8" thick doors.	9540	9820	8
60#	9683	Aluminum track with grooved fascia - hardware for 1-3/8" thick doors.	9401 hangers	9820	8
125#	9673	Heavy duty aluminum box track with grooved fascia & hardware for 1-3/8" - 1-3/4" thick doors.	9679	9603	10
125#	9675	Heavy duty aluminum box track & hardware for 1-3/8" thick doors	9679	9602	11
150#	9611	Aluminum double box track & hardware for 1-3/8" & 1-3/4" thick doors.	9892	9821	7
150#	9674	Heavy duty aluminum box track with grooved fascia & hardware for 1-3/8" & 1-3/4" thick doors.	9680	9603	10
150#	9676	Heavy duty aluminum box track & hardware for 1-3/8" thick doors.	9680	9602	11
175#	9110	Heavy duty aluminum I-beam track and hardware for 1" – 1-3/4" thick doors. *Must order 2 per by pass.*	9109	9101	4
250#	9612	Aluminum double box track & hardware for 1-3/8" & 1-3/4" thick doors.	9893	9821	7
250#	9875	Heavy duty aluminum box track & hardware for 1-3/8" & 1-3/4" thick doors.	9827 hangers	9801	15
250#	9885	Heavy duty aluminum double track with smooth fascia & hardware for 1-3/8" & 1-3/4" thick doors.	9827 hangers	9803	16
250#	9886	Heavy duty aluminum double track with smooth fascia & hardware for 1-3/8" & 1-3/4" thick doors.	9827 hangers	9803	16
275#	9130	Heavy duty aluminum I-beam track and hardware for 1" thick doors and up. *Must order 2 per by pass.*	9129	9101	4
Bi-Fold Sets					
50#	9570	Aluminum track & hardware for 1-1/8" & 1-3/4" thick doors.	9571	9601	17
125#	9860	Heavy duty aluminum box track & hardware for 1-3/8" & 1-3/4" thick doors.	9894	9821	18
125#	9861	Heavy duty aluminum box track & hardware for 1-3/8" & 1-3/4" thick doors.	9894	9821	18
125#	9890	Heavy duty aluminum box track & hardware for for 1-1/8" & 1-3/4" thick doors. Up to 75 lbs per panel for multi fold applications.	9827 hangers	9801	19
125#	9891	"Heavy duty aluminum box track & hardware for 1-1/8" & 1-3/4" thick doors.	9827 hangers	9801	19
Pocket Door Sets					
150#	9878CS	Heavy duty aluminum box track & hardware for 1-3/8" & 1-3/4" thick doors.	9805		22
250#	9878HD	Aluminum box track & hardware for 1-3/8" thick doors and up.	9806		22
Pocket Door Frame Kits All Pocket Door Framed Kits for 1-3/8" Thick Doors					
150#	9628CS	9628CS, 108", 150 lbs, Commercial Pocket Door Kit	9805 hangers	N/A	21
150#	9629CS	9629CS, 96", 150 lbs, Commercial Pocket Door Kit	9805 hangers	N/A	21
150#	9630CS	9630CS, 84", 150 lbs, Commercial Pocket Door Kit	9805 hangers	N/A	21
150#	9631CS	9631CS, 80", 150 lbs, Commercial Pocket Door Kit	9805 hangers	N/A	21
250#	9850HD	9850HD, 96", 102", 250 lbs, Heavy Duty Pocket Door Kit	9806 hangers	N/A	23
250#	9852HD	9852HD, 80", 84", 250 lbs, 2x6, Heavy Duty Pocket Door Kit	9806 hangers	N/A	23
Wall Mount Sets					
250#	9710HD	Heavy duty aluminum track & hardware for 1" & 1-3/4" thick doors.	9806	N/A	26
Barn Door Pakaged Sets					
250#	All	9400 Series Stainless Steel Barn Door	N/A	N/A	42
250#	All	eConestoga Series Barn Door Hardware	N/A	A	44



Sliding Door Hardware - 9110 and 9130 Packaged Sets - By-Pass



Description	Finish	2022 List	Stock No.	Case Qty.
9110 Packaged Sets for doors up to 175 lbs (79 kg) per door.				
Contents: 9101 track, 9109 parts bag				
Heavy duty aluminum I-beam track & hardware for 1" - 1-3/4" (25mm - 45mm) thick doors.				
9110-60 - Packaged set for 2'6" door	60" (1524 mm)	151.72	135334	5
9110-72 - Packaged set for 3'0" door	72" (1829 mm)	167.69	135335	
9110-84 - Packaged set for 3'6" door	84" (2134 mm)	182.66	135336	
9110-96 - Packaged set for 4'0" door	96" (2438 mm)	198.82	135337	
9110-120 - Packaged set for 5'0" door	120" (3048 mm)	204.70	135338	
9110-144 - Packaged set for 6'0" door	144" (3658 mm)	239.73	135339	

Note: Must order 2 each 9110 packaged sets

9130 Packaged Sets for doors up to 275 lbs (125 kg) per door.

Contents: 9101 track, 9129 parts bag

9130-60 - Packaged set for 2'6" door	60" (1524 mm)	193.81	135340	5
9130-72 - Packaged set for 3'0" door	72" (1829 mm)	207.78	135341	
9130-84 - Packaged set for 3'6" door	84" (2134 mm)	209.84	135342	
9130-96 - Packaged set for 4'0" door	96" (2438 mm)	228.77	135343	
9130-120 - Packaged set for 5'0" door	120" (3048 mm)	270.73	135344	
9130-144 - Packaged set for 6'0" door	144" (3658 mm)	302.11	135346	

Note: Must order 2 each 9130 packaged sets



9101-60 - I-beam track only, heavy duty aluminum	60" (1524 mm)	AL	70.78	023278	5
9101-72 - I-beam track only, heavy duty aluminum	72" (1829 mm)	AL	88.64	096508	
9101-84 - I-beam track only, heavy duty aluminum	84" (2134 mm)	AL	105.61	096509	
9101-96 - I-beam track only, heavy duty aluminum	96" (2438 mm)	AL	112.88	096707	
9101-120 - I-beam track only, heavy duty aluminum	120" (3048 mm)	AL	147.65	096511	
9101-144 - I-beam track only, heavy duty aluminum	144" (3658 mm)	AL	177.65	096512	
9101-192 - I-beam track only, heavy duty aluminum	192" (4877 mm)	AL	235.84	096513	

Parts Description

9109 - 2 ea. 9102 two wheel hangers, 1 ea. 9115 floor guide. <i>*Up to 175 lbs (79 kg) per door.*</i>	73.54	135690	10
9129 - 2 ea. 9105 four wheel hangers, 1 ea. 9115 floor guide. <i>*Up to 275 lbs (125 kg) per door.*</i>	108.50	135315	10

Components Description

9102 2 Wheel Hanger - For use with 9101 track	US2C	32.26	135310	20
9105 4 Wheel Hanger - For use with 9101 track	US2C	48.42	135312	40
9115 Bottom Door Guide	US2C	11.46	096522	50



1. For additional components, refer to component section. 2. U/M is each unless otherwise noted. 4. Packaged sets and parts bags are available with optional components by special quotation.



Sliding Door Hardware - 9514 and 9583 Packaged Sets - By-Pass



Description	Finish	2022 List	Stock No.	Case Qty.
9514 Packaged Sets for doors up to 60 lbs (27 kg) each for two (2) doors.				
Contents: 9810 track, 9814 parts bag. Refer to side mount selection chart for combination of hangers.				
Aluminum track & hardware				
For 3/4" (19 mm) and 1-3/8" (35mm) thick doors.				
9514-48 - By-pass set for two 24" doors	48" (1219 mm)	48.42	099662	5
9514-60 - By-pass set for two 30" doors	60" (1524 mm)	52.43	099663	
9514-72 - By-pass set for two 36" doors	72" (1829 mm)	58.38	099666	
9514-96 - By-pass set for two 48" doors	96" (2438 mm)	77.54	017418	
9583 Packaged Sets for doors up to 60 lbs (27 kg) each for three (32") doors.				
Contents: 9810 track, 2 ea. 9400 hangers, 4 ea. 9401 hangers, 2 ea. 9353 guides, 3 ea. 2610 pulls				
9583-96 -	96" (2438 mm)	88.64	029415	5
9810-46 - Aluminum track	46-3/8" (1178 mm)	AL 20.42	019702	10
9810-58 - Aluminum track	58-3/8" (1483mm)	AL 24.36	019703	
9810-70 - Aluminum track	70-3/8" (1788mm)	AL 29.57	019704	
9810-93 - Aluminum track	93-3/8# (2372 mm)	AL 38.28	019705	
9810-120 - Aluminum track	120" (3048 mm)	AL 48.42	016570	
9810-144 - Aluminum track	144" (3658 mm)	AL 64.39	026064	
Parts Description				
9814 - 2 ea. 9400 hangers, 2 ea. 9401 hangers, 2 ea. 2610 pulls, 1 ea. 9353 guide		19.29	016772	10
9841 - For 1" to 1-1/8", specify 9841 parts bag. 4 ea. 9401 hangers, 2 ea. 9865 pulls, 1 ea. 9351 guide		10.46	099665	10
Components Description				
2610	US3	1.25	013049	500
Finger Pull	US4	1.25	071953	
Material: Brass	US5	1.25	067282	
Overall Diameter: 31/32"	US10A	1.25	068711	
Finger Pull Diameter: 3/4"	US15	1.25	040589	
Pull Clearance: 5/16"	US15A	1.25	040590	
Projection: 1/32"	US26	1.25	013047	
	US26D	1.25	071169	
9351		3.45	096563	50
Door Guide				
9353		3.45	096564	20
Adjustable Door Guide				
9400	US2C	4.32	017417	100
Cam Adjustable Hanger - Small 3/8" (10 mm) offset A				
9401	US2C	4.32	096566	100
Cam Adjustable Hanger - Large 11/16" (18 mm) offset B				

1. For additional components, refer to component section. 2. U/M is each unless otherwise noted. 4. Packaged sets and parts bags are available with optional components by special quotation.



Sliding Door Hardware - 9865 Packaged Sets - By-Pass



Description	Finish	2021 List	Stock No.	Case Qty.
9865 Plastic Pull Overall Diameter: 1-31/32" Finger Pull Diameter: 1-19/32" Pull Clearance: 11/32" Projection: 5/64"	Plastic	1.32	098993	50



Sliding Door Hardware - 9611 and 9612 Packaged Sets - By-Pass



Description	Finish	2022 List	Stock No.	Case Qty.	
9611 Packaged Sets for doors up to 150 lbs (68 kg) each.					
9573 spacer kit is used for 1-3/4" (4 mm) doors. No spacer kit required for 1-3/8" (35 mm) doors. Contents: 2 ea. 9821 tracks, 9892 parts bag					
For 1-3/8" (35 mm) and 1-3/4" (44 mm) thick doors.					
9611-60 - By-pass set for two 30" doors	60" (1524 mm)	163.74	019404	5	
9611-72 - By-pass set for two 36" doors	72" (1829 mm)	176.02	019402		
9611-96 - By-pass set for two 48" doors	96" (2438 mm)	212.91	019389		
9612 Packaged Sets for doors up to 250 lbs (113 kg) each.					
Contents: 2 pcs 9821 Track, 9893 Parts bag					
9612-60 - By-pass set for two 30" doors	60" (1524 mm)	205.77	019368	5	
9612-72 - By-pass set for two 36" doors	72" (1829 mm)	219.99	019362		
9612-96 - By-pass set for two 48" doors	96" (2438 mm)	239.54	019378		
9821-59 - Aluminum box track	59" (1499 mm)	AL	39.40	019084	10
9821-71 - Aluminum box track	71" (1803 mm)	AL	49.42	019062	
9821-96 - Aluminum box track	96" (2438 mm)	AL	65.90	019061	
9821-144 - Aluminum box track	144" (3658 mm)	AL	95.46	019050	
Grooved fascia for painting					
9709-48 - Aluminum grooved fascia, 2-3/4" (70 mm) wide	48" (1219 mm)	AL	44.41	023321	10
9709-60 - Aluminum grooved fascia, 2-3/4" (70 mm) wide	60" (1524 mm)	AL	66.52	023322	
9709-72 - Aluminum grooved fascia, 2-3/4" (70 mm) wide	72" (1829 mm)	AL	76.36	096603	
9709-96 - Aluminum grooved fascia, 2-3/4" (70 mm) wide	96" (2438 mm)	AL	86.51	096604	
Parts Description					
9892 - 4 ea. 9824 four-wheel hangers w/ top mount plate, 1 ea. 9909 guide, 9573 spacer kit		68.03	019421	10	
9893 - 4 ea. 9825 four-wheel ball bearing hangers w/ top mount plate, 1 ea. 9909 guide, 9573 spacer kit		127.28	019418	10	
Components Description					
9573 Spacer Kit - 3/8" use with 9821 track - For doors 1-3/4" thick		6.39	019014	5	
9824 4 Wheel Hanger w/ Top Mount Plate		35.89	135320	20	
9825 4 Wheel Ball Bearing Hanger w/ Top Mount Plate		45.10	135321	10	
9909 Heavy Duty Adjustable Door Guide From 3/4" to 1-3/4" (19 mm to 44 mm)	US2C	10.46	097528	20	

1. For additional components, refer to component section. 2. U/M is each unless otherwise noted. 4. Packaged sets and parts bags are available with optional components by special quotation.



Sliding Door Hardware - 9614 and 9683 Packaged Sets - By-Pass



Components Description	Finish	2022 List	Stock No.	Case Qty.
9614 Packaged Sets for doors up to 60 lbs (27 kg).				
Contents: 9820 track, 9540 parts bag. Refer to side mount selection chart on page 2 for combination of hangers. Aluminum track & hardware with 1-3/4" (44 mm) grooved fascia. For 1-3/8" (35 mm) thick doors.				
9614-48 - By-pass set for two 24" doors	48" (1219 mm)	60.51	099091	5
9614-60 - By-pass set for two 30" doors	60" (1524 mm)	68.53	099756	
9614-72 - By-pass set for two 36" doors	72" (1829 mm)	78.43	016652	



9683 Packaged Sets for three (3) 32" doors and doors up to 60 lbs. (27 kg) each.				
Contents: 9820 track, 6 ea. 9401 hangers, 2 ea. 9351 guides, and 3 ea. 2610 pulls				
9683-96 - By-pass set for three 32" doors	96" (2438 mm)	110.62	022329	
Grooved fascia for painting				
9820-48 - Aluminum track with 1-3/4" grooved fascia	48" (1219 mm)	AL	37.52	000461 5
9820-60 - Aluminum track with 1-3/4" grooved fascia	60" (1524 mm)	AL	46.54	000462
9820-72 - Aluminum track with 1-3/4" grooved fascia	72" (1829 mm)	AL	54.43	000463
9820-84 - Aluminum track with 1-3/4" grooved fascia	84" (2134 mm)	AL	73.54	028175
9820-96 - Aluminum track with 1-3/4" grooved fascia	96" (2438 mm)	AL	80.43	099664
9820-120 - Aluminum track with 1-3/4" grooved fascia	120" (3048 mm)	AL	92.64	000464
9820-144 - Aluminum track with 1-3/4" grooved fascia	144" (3658 mm)	AL	120.64	000460

Parts Description				
9540 - 4 ea. 9401 hangers, 2 ea. 2610 pull, 1 ea. 9351 guide		12.34	017419	10
9544 - 4 ea. 9202 hangers, 2 ea. 2630 pull, 1 ea. 9351 guide <i>*Used to increase door weight capacity to 75 lbs*</i>		18.29	017035	
9841 - 4 ea. 9401 hangers, 2 ea. 9865 pull, 1 ea. 9351 guide		10.46	099665	
9842 - 4 ea. 9401 hangers, 2 ea. 2630 pull, 1 ea., 9351 guide		14.34	017424	
9843 - 4 ea. 9202 hangers, 2 ea. 9865 pull, 1 ea. 9351 guide <i>*Used to increase door weight capacity to 75 lbs*</i>		16.35	016912	



Components Description				
2610	US3	1.25	013049	500
Finger Pull	US4	1.25	071953	
Material: Brass	US5	1.25	067282	
Overall Diameter: 31/32"	US10A	1.25	068711	
Finger Pull Diameter: 3/4"	US15	1.25	040589	
Pull Clearance: 5/16"	US15A	1.25	040590	
Projection: 1/32"	US26	1.25	013047	
	US26D	1.25	071169	



2630	US3	5.39	051919	50
Round Flush Pull	US4	5.39	073783	
Material: Brass	US5	5.39	053163	
Overall Diameter: 2-7/16" Finger	US10A	5.39	073053	
Pull Diameter: 2-1/16" Pull	US15	5.39	073056	
Clearance: 11/32" Projection:	US15A	5.39	005307	
3/32"	US26	5.39	023430	
	US26D	5.39	023431	



1. For additional components, refer to component section. 2. U/M is each unless otherwise noted. 4. Packaged sets and parts bags are available with optional components by special quotation.

Sliding Door Hardware - 9614 and 9683 Packages Sets - By-Pass



Description	Finish	2022 List	Stock No.	Case Qty.
9202 Twin Wheel Hanger - Large 11/16" (18 mm) offset B	US2C	4.32	096562	100
9351 Door Guide		3.45	096563	50
9400 Cam Adjustable Hanger - Small 3/8" (10 mm) offset A	US2C	4.32	017417	100
9401 Cam Adjustable Hanger - Large 11/16" (18 mm) offset B	US2C	4.32	096566	100
9865 Plastic Pull Overall Diameter: 1-31/32" Finger Pull Diameter: 1-19/32" Pull Clearance: 11/32" Projection: 5/64"	Plastic	1.32	098993	50

1. For additional components, refer to component section. 2. U/M is each unless otherwise noted. 4. Packaged sets and parts bags are available with optional components by special quotation.

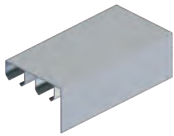
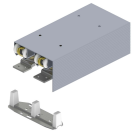
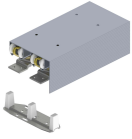


Sliding Door Hardware - 9673 and 9674 Packaged Sets - By-Pass

Description	Finish	2022 List	Stock No.	Case Qty.	
9673 Packaged Sets for doors up to 125 lbs (57 kg).					
Contents: 9603 track, 9679 parts bag Heavy duty aluminum double box track & hardware with 2-5/8" (66 mm) grooved fascia. For 1-3/8" (35 mm) and 1-3/4" (44 mm) thick doors.					
9673-48 - By-pass set for two 24" doors	48" (1219 mm)	174.77	137170	5	
9673-60 - By-pass set for two 30" doors	60" (1524 mm)	188.67	137171		
9673-72 - By-pass set for two 36" doors	72" (1829 mm)	199.70	137172		
9673-96 - By-pass set for two 48" doors	96" (2438 mm)	244.92	137173		
9674 Packaged Sets for doors up to 150 lbs (68 kg).					
9674-48 - By-pass set for two 24" doors	48" (1219 mm)	228.76	136345	5	
9674-60 - By-pass set for two 30" doors	60" (1524 mm)	241.85	136346		
9674-72 - By-pass set for two 36" doors	72" (1829 mm)	260.90	136347		
9674-96 - By-pass set for two 48" doors	96" (2438 mm)	302.11	136349		
Grooved fascia for painting.					
Double box track w/ built in grooved fascia.					
9603-48 - Aluminum box track with grooved fascia	48" (1219 mm)	AL	78.43	135288	5
9603-60 - Aluminum box track with grooved fascia	60" (1524 mm)	AL	94.52	135289	
9603-72 - Aluminum box track with grooved fascia	72" (1829 mm)	AL	112.56	135290	
9603-96 - Aluminum box track with grooved fascia	96" (2438 mm)	AL	146.77	135291	
9603-120 - Aluminum box track with grooved fascia	120" (3048 mm)	AL	183.79	029359	
9603-144 - Aluminum box track with grooved fascia	144" (3658 mm)	AL	225.941	029360	

Parts Description	2022 List	Stock No.	Case Qty.
9575 - 4 ea. 9572 hangers w/ top mount plate, 1 ea. 9909 guide	35.45	137167	5
9679 - 4 ea. 9605 hangers w/ top mount plate, 1 ea. 9909 guide	57.33	137179	
9680 - 4 ea. 9606 ball bearing hangers w/ top mount plate, 1 ea. 9909 guide	116.57	136357	

Components Description	2022 List	Stock No.	Case Qty.	
9572 4 Wheel Hanger w/ Top Mount Plate	US2D	15.35	135316	20
9605 4 Wheel Hanger w/ Top Mount Plate	US2D	7.20	135317	20
9606 4 Wheel Ball Bearing Hanger w/ Top Mount Plate	US2D	22.36	135318	20
9909 Heavy Duty Adjustable Door Guide From 3/4" to 1-3/4" (19 mm to 44 mm)	US2C	10.46	097528	20



1. For additional components, refer to component section. 2. U/M is each unless otherwise noted. 4. Packaged sets and parts bags are available with optional components by special quotation.

Sliding Door Hardware - 9675 and 9676 Packaged Sets - By-Pass



Description	Finish	2022 List	Stock No.	Case Qty.
9675 Packaged Sets for doors up to 125 lbs (57 kg) each.				
Contents: 9602 track, 9679 parts bag				
Heavy duty aluminum double box track & hardware For 1-3/8" (35 mm) thick doors.				
9675-48 - By-pass set for two 24" doors	48" (1219 mm)	114.63	137175	5
9675-60 - By-pass set for two 30" doors	60" (1524 mm)	122.59	137176	
9675-72 - By-pass set for two 36" doors	72" (1829 mm)	134.61	137177	
9675-96 - By-pass set for two 48" doors	96" (2438 mm)	158.73	137178	
9676 Packaged Sets for doors up to 150 lbs (68 kg) each.				
9676-48 - By-pass set for two 24" doors	48" (1219 mm)	174.77	136350	5
9676-60 - By-pass set for two 30" doors	60" (1524 mm)	176.71	136351	
9676-72 - By-pass set for two 36" doors	72" (1829 mm)	194.81	136352	
9676-96 - By-pass set for two 48" doors	96" (2438 mm)	215.86	136353	
Grooved fascia for painting				
9709-48 - Aluminum grooved fascia, 2-3/4" (70 mm) wide	48" (1219 mm)	AL 44.41	023321	10
9709-60 - Aluminum grooved fascia, 2-3/4" (70 mm) wide	60" (1524 mm)	AL 66.52	023322	
9709-72 - Aluminum grooved fascia, 2-3/4" (70 mm) wide	72" (1829 mm)	AL 76.36	096603	
9709-96 - Aluminum grooved fascia, 2-3/4" (70 mm) wide	96" (2438 mm)	AL 86.51	096604	
9602-46 - Double box track only, heavy duty aluminum	46" (1168 mm)	AL 42.47	096582	5
9602-58 - Double box track only, heavy duty aluminum	58" (1473 mm)	AL 52.43	096583	
9602-70 - Double box track only, heavy duty aluminum	70" (1778 mm)	AL 60.51	096584	
9602-94 - Double box track only, heavy duty aluminum	94" (2388 mm)	AL 78.43	096585	
9602-118 - Double box track only, heavy duty aluminum	118" (2997 mm)	AL 90.77	096586	
9602-142 - Double box track only, heavy duty aluminum	142" (3607 mm)	AL 112.56	096587	
Parts Description				
9575 - 4 ea. 9572 hangers w/ top mount plate, 1 ea. 9909 guide		35.45	137167	5
9679 - 4 ea. 9605 hangers w/ top mount plate, 1 ea. 9909 guide		53.77	137179	5
9680 - 4 ea. 9606 ball bearing hangers w/ top mount plate, 1 ea. 9909 guide		116.57	136357	5
Components Description				
9572 - 4 Wheel Hanger w/ Top Mount Plate	US2D	15.35	135316	20
9605 - 4 Wheel Hanger w/ Top Mount Plate	US2D	7.20	135317	20

1. For additional components, refer to component section. 2.U/M is each unless otherwise noted. 4. Packaged sets and parts bags are available with optional components by special quotation.



Sliding Door Hardware - 9675 and 9676 Packaged Sets - By-Pass



Components Description	Finish	2022 List	Stock No.	Case Qty.
9606 - 4 Wheel Ball Bearing Hanger w/ Top Mount Plate	US2D	22.36	135318	20
9909 - Heavy Duty Adjustable Door Guide From 3/4" to 1-3/4" (19 mm to 44 mm)	US2C	10.46	097528	20



Sliding Door Hardware - 9875 Packaged Sets - By-Pass



Description	Finish	2022 List	Stock No.	Case Qty.
9875 Packaged Sets for doors up to 250 lbs (113 kg).				
Contents: 2 ea. 9801 tracks, 4 ea. 9827 hangers w/ top mount plate, 1 ea. 9574 spacer, 1 ea. 9909 guide Heavy duty Aluminum box track & hardware				
For 1-3/8" (35 mm) and 1-3/4" (44 mm) thick doors.				
9574 spacer kit is used for 1-3/4" (44 mm) doors.				
No spacer kit required for 1-3/8" (35 mm) doors.				
9875-48 - By-pass set for two 24" doors	48" (1219 mm)	236.97	137420	6
9875-60 - By-pass set for two 30" doors	60" (1524 mm)	299.04	137421	
9875-72 - By-pass set for two 36" doors	72" (1829 mm)	315.02	137422	
9875-96 - By-pass set for two 48" doors	96" (2438 mm)	353.10	137423	
Grooved fascia for painting				
9809-72 - Aluminum grooved fascia, 3-7/8" (98 mm) thick	72" (1829 mm)	AL	119.58	096646
9809-96 - Aluminum grooved fascia, 3-7/8" (98 mm) thick	96" (2438 mm)	AL	156.60	096647
9801-72 - Aluminum box track	72" (1829 mm)	AL	64.39	096641
9801-96 - Aluminum box track	96" (2438 mm)	AL	86.51	096642
9801-120 - Aluminum box track	120" (3048 mm)	AL	108.49	096643
9801-144 - Aluminum box track	144" (3658 mm)	AL	141.63	096644
9801-192 - Aluminum box track	192" (4877 mm)	AL	188.67	096645
Components Description				
9574			6.39	015991
Spacer Kit - For use with 9801 - For doors 1-3/8" and 1-3/4" thick				
9827			52.43	018292
4 Wheel Ball bearing Hanger w/ Top Mount Plate				
9909		US2C	10.46	097528
Heavy Duty Adjustable Door Guide From 3/4" to 1-3/4" (19 mm to 44 mm)				

1. For additional components, refer to component section. 2. U/M is each unless otherwise noted. 4. Packaged sets and parts bags are available with optional components by special quotation.



Sliding Door Hardware - 9885 and 9886 Packaged Sets - Bi-Fold



Description	Finish	2022 List	Stock No.	Case Qty.
9885 Packaged Sets for two (2) doors up to 250 lbs (113 kg) each.				
Contents: 9803 track, 4 ea. 9827 hangers w/ top mount plate, 1 ea. 9909 guide, 1 ea. 9815 center stop for 9886 only. Heavy duty aluminum double box track with 3-1/2" (89 mm) smooth fascia & hardware, for two doors. For 1-3/8" (35 mm) and 1-3/4" (44 mm) thick doors.				
9885-48 - By-pass set for two 24" doors	48" (1219 mm)	270.04	137463	1
9885-60 - By-pass set for two 30" doors	60" (1524 mm)	302.99	137464	
9885-72 - By-pass set for two 36" doors	72" (1829 mm)	339.19	137465	
9885-96 - By-pass set for two 48" doors	96" (2438 mm)	389.98	137470	
9886 Packaged Sets for four (4) 24" doors up to 250 lbs. (113 kg) each.				
Contents: 9803 track, 8 ea. 9827 hangers w/ top mount plate, 2 ea. 9815 center stops, 2 ea. 9909 adjustable door guides.				
9886-96 - By-pass set for four 24" doors	96" (2438 mm)	547.47	137471	1

Components Description				
9815 Bumper Stop		9.21	096648	20
9827 4 Wheel Ball bearing Hanger w/ Top Mount Plate		52.43	018292	10
9909 Heavy Duty Adjustable Door Guide From 3/4" to 1-3/4" (19 mm to 44 mm)	US2C	10.46	097528	20



Sliding Door Hardware - 9570 Packaged Sets - Bi-Fold



Description	Finish	2022 List	Stock No.	Case Qty.	
9570 Packaged Sets for doors up to 50 lbs (23 kg) bi-fold, 30 lbs per multi fold.					
Contents for 2 door set: 9601 Track, 9569 parts bag. Aluminum box track & hardware for 1" (25 mm) - 1-3/4" (44 mm) thick doors.					
9570-36 - Bi-fold set for two 18" doors	36" (914 mm)	AL	68.53	137161	6
9570-48 - Bi-fold set for four 12" doors	48" (1219 mm)	AL	100.60	137162	
9570-60 - Bi-fold set for four 15" doors	60" (1524 mm)	AL	108.49	137163	
9570-72 - Bi-fold set for four 18" doors	72" (1829 mm)	AL	116.57	137164	
9570-96 - Bi-fold set for four 24" doors	96" (2438 mm)	AL	161.67	137165	
9601-47 - Aluminum box track	47" (1194 mm)	AL	22.36	096576	10
9601-59 - Aluminum box track	59" (1499 mm)	AL	28.88	096577	
9601-71 - Aluminum box track	71" (1803 mm)	AL	31.45	096578	
9601-96 - Aluminum box track	96" (2438 mm)	AL	48.73	096579	
9601-120 - Aluminum box track	120" (3048 mm)	AL	54.43	096580	
9601-144 - Aluminum box track	144" (3658 mm)	AL	64.39	096581	

Parts Description	2022 List	Stock No.	Case Qty.
9569 - 1 ea. 9572 hanger w/ top mount plate, 9618 pivot set, 9559 aligner, 9558 knob and 9815 bumper stop, 3 ea. 9220 hinges	30.38	016913	10



Components Description	Finish	2022 List	Stock No.	Case Qty.
9220 Non-Mortise Bi-Fold Hinge with Screws	US2D	2.38	099119	600
9558 Wood Knob Knob Diameter: 1-1/2" Base Diameter: 15/16" Fasteners: #8 x 1-3/4" PPHWS	Wood	2.38	096567	100
9559 Aligner	US2D	1.32	096568	200
9572 4 Wheel Hanger w/ Top Mount Plate	US2D	15.35	135316	20
9815 Bumper Stop		9.21	096648	20
9618 Pivot Set - For 9570 series	-	10.46	137182	10

1. For additional components, refer to component section. 2. U/M is each unless otherwise noted. 4. Packaged sets and parts bags are available with optional components by special quotation.



Sliding Door Hardware - 9860 and 9861 Packaged Sets - Pocket Door



Description	Finish	2022 List	Stock No.	Case Qty.	
9860 Packaged Sets for doors up to 125 lbs (57 kg) per panel bi-fold.					
Contents: 9821 track, 1 ea. 9894 parts bag, and 3 ea. 1741 hinges Heavy duty Aluminum box track & hardware. For 1-3/8"(35mm) and 1-3/4"(44mm) thick doors.					
9860-30 - Bi-fold set for two 15" doors	30" (762 mm)	128.35	019456	6	
9860-36 - Bi-fold set for two 18" doors	36" (914 mm)	138.31	019452		
9860-48 - Bi-fold set for two 24" doors	48" (1219 mm)	154.53	019451		
9861 Packaged Sets for doors up to 125 lbs. (57 kg) per panel for multi-fold.					
Contents: 9821 track, 2 ea. 9894 parts bag, and 6 ea. 1741 hinges					
9861-48 - Bi-fold set for four 12" doors	48" (1219 mm)	246.61	019446	6	
9861-60 - Bi-fold set for four 15" doors	60" (1524 mm)	255.63	019439		
9861-72 - Bi-fold set for four 18" doors	72" (1829 mm)	273.42	019438		
9861-96 - Bi-fold set for four 24" doors	96" (2438 mm)	299.86	019437		
9821-59 - Aluminum box track	59" (1499 mm)	AL	39.90	019084	10
9821-71 - Aluminum box track	71" (1803 mm)	AL	49.42	019062	
9821-96 - Aluminum box track	96" (2438 mm)	AL	65.90	019061	
9821-144 - Aluminum box track	144" (3658 mm)	AL	95.46	019050	

Parts Description	2022 List	Stock No.	Case Qty.
9894 - 1 ea. 9825 hanger w/ top mount plate, 9828 bi-fold pivot, 9815 bumper stop, 9559 aligner	113.57	019435	10

Components Description	2022 List	Stock No.	Case Qty.
1741 Full Mortise Plain Bearing Hinges with Screws 3-1/2" x 3-1/2"	US2D 2.51	029658	50
9559 Aligner	US2D 1.32	096568	200
9815 Bumper Stop	9.21	096648	20
9825 Ball Bearing Hanger w/ Top Mount Plate	45.10	135321	10
9828 Heavy Duty Pivot Set with 9815 Bumper Stop	65.21	018286	10



1. For additional components, refer to component section. 2. U/M is each unless otherwise noted. 4. Packaged sets and parts bags are available with optional components by special quotation.

Sliding Door Hardware - 9890 and 9891 Packaged Sets - Bi-Fold



Description	Finish	2022 List	Stock No.	Case Qty.
9890 Packaged Sets for doors up to 125 lbs (57 kg).				
Contents: 9801 track, 9827 hangers w/ top mount plate, 9828 pivots & 1741 hinges (3 ea. for 2 doors, 6 ea. for 4 doors)				
Heavy duty aluminum box track & hardware for 1-1/8"(29mm) and 1-3/4"(44mm) thick doors.				
9890-30 - Bi-fold set for two 15" doors	30" (762 mm)	137.75	017732	6
9890-36 - Bi-fold set for two 18" doors	36" (914 mm)	143.45	017444	
9890-48 - Bi-fold set for two 24" doors	48" (1219 mm)	160.73	017439	
9891-48 - Bi-fold set for four 12" doors	48" (1219 mm)	244.55	017438	6
9891-60 - Bi-fold set for four 15" doors	60" (1524 mm)	257.89	017437	
9891-72 - Bi-fold set for four 18" doors	72" (1829 mm)	276.99	017436	
9891-96 - Bi-fold set for four 24" doors	96" (2438 mm)	304.74	017434	
9801-48 - Aluminum box track	48" (1219 mm)	AL 42.91	040426	6
9801-72 - Aluminum box track	72" (1829 mm)	AL 64.39	096641	
9801-96 - Aluminum box track	96" (2438 mm)	AL 86.51	096642	
9801-120 - Aluminum box track	120" (3048 mm)	AL 108.49	096643	
9801-144 - Aluminum box track	144" (3658 mm)	AL 141.63	096644	
9801-192 - Aluminum box track	192" (4877 mm)	AL 188.67	096645	



Components Description	Finish	2022 List	Stock No.	Case Qty.
1741 Full Mortise Plain Bearing Hinges with Screws 3-1/2" x 3-1/2"	US2D	2.51	029658	50
9827 4 Wheel Ball bearing Hanger w/ Top Mount Plate		52.43	018292	10
9828 Heavy Duty Pivot Set with 9815 Bumper Stop		65.21	018286	10

1. For additional components, refer to component section. 2. U/M is each unless otherwise noted. 4. Packaged sets and parts bags are available with optional components by special quotation.



Sliding Door Hardware - 9110 and 9130 - Pocket Door Framed Kits



Description	Finish	2022 List	Stock No.	Case Qty.
9110 Packaged Sets for doors up to 175 lbs (79 kg) per door.				
Contents: 9101 track, 9109 parts bag				
Heavy duty aluminum I-beam track & hardware for 1"(25mm) thick doors.				
9110-60 - Packaged set for 2'6" door	60" (1524 mm)	151.71	135334	5
9110-72 - Packaged set for 3'0" door	72" (1829 mm)	167.69	135335	
9110-84 - Packaged set for 3'6" door	84" (2134 mm)	182.66	135336	
9110-96 - Packaged set for 4'0" door	96" (2438 mm)	198.82	135337	
9110-120 - Packaged set for 5'0" door	120" (3048 mm)	204.71	135338	
9110-144 - Packaged set for 6'0" door	144" (3658 mm)	239.72	135339	

9130 Packaged Sets for doors up to 275 lbs (125 kg) per door.

Contents: 9101 track, 9129 parts bag

9130-60 - Packaged set for 2'6" door	60" (1524 mm)	193.81	135340	5
9130-72 - Packaged set for 3'0" door	72" (1829 mm)	207.78	135341	
9130-84 - Packaged set for 3'6" door	84" (2134 mm)	209.84	135342	
9130-96 - Packaged set for 4'0" door	96" (2438 mm)	228.76	135343	
9130-120 - Packaged set for 5'0" door	120" (3048 mm)	270.73	135344	
9130-144 - Packaged set for 6'0" door	144" (3658 mm)	302.11	135346	



9101-60 - I-beam track only, heavy duty aluminum	60" (1524 mm)	AL	70.78	023278	5
9101-72 - I-beam track only, heavy duty aluminum	72" (1829 mm)	AL	88.64	096508	
9101-84 - I-beam track only, heavy duty aluminum	84" (2134 mm)	AL	105.61	096509	
9101-96 - I-beam track only, heavy duty aluminum	96" (2438 mm)	AL	112.88	096707	
9101-120 - I-beam track only, heavy duty aluminum	120" (3048 mm)	AL	147.64	096511	
9101-144 - I-beam track only, heavy duty aluminum	144" (3658 mm)	AL	177.65	096512	
9101-192 - I-beam track only, heavy duty aluminum	192" (4877 mm)	AL	235.84	096513	

Parts Description

9109 - 2 ea. 9102 two wheel hangers, 1 ea 9115 floor guide. *Up to 175 lbs (79 kg) per door.*		73.54	135690	10
9129 - 2 ea. 9105 four wheel hangers, 1 ea 9115 floor guide. *Up to 275 lbs (125 kg) per door.*		108.49	135315	10

Components Description

9102 2 Wheel Hanger - For use with 9101 track	US2C	32.26	135310	20
9105 4 Wheel Hanger - For use with 9101 track	US2C	48.42	135312	40
9115 Bottom Door Guide	US2C	11.46	096522	50



1. For additional components, refer to component section. 2. U/M is each unless otherwise noted. 4. Packaged sets and parts bags are available with optional components by special quotation.

Sliding Door Hardware - 9628CS | 9629CS | 9630CS | 9631CS - 9600 Commercial Series Pocket Door Frame Kits



Description	Door Height	Finish	2022 List	Stock No.	Case Qty.
9628CS - For 3'0" wide x 9'0" high doors up to 150 lbs (68 kg) per door.	108" (2743 mm)	AL	317.08	020463	1
9629CS - For 3'0" wide x 8'0" high doors up to 150 lbs (68 kg) per door.	96" (2438 mm)	AL	288.90	020464	1
9630CS - For 3'0" wide x 7'0" high doors up to 150 lbs (68 kg) per door.	84" (2134 mm)	AL	283.01	020458	1
9631CS - For 3'0" wide x 6'8" high doors up to 150 lbs (68 kg) per door.	80" (2032 mm)	AL	280.84	020459	1

Note: Pocket Door Frame Kits Contents: 2"x4" Header and Track Assembly, 2 pairs of Split Studs, 2 each Floor Plates, 2 End Brackets, 2 each (9805) rollers with hanger plates, 1 each (9881CS) Bumper, and 1 pair (9883CS) Floor Guide. For 1-3/8" (35 mm) thick doors. 9634CS (sold separately) for 1-3/4" doors.

Replacement Description



1-269-8651 Soft Close Mechanism. Compatible with all Commercial & Heavy-Duty Pocket Door Framed Kits.	80.30	027859	20
---	-------	--------	----



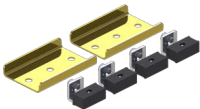
9805 4-Wheel Hanger, 150 lbs, CS Series (2-Pack)	20.67	027860	100
--	-------	--------	-----



9806 4-Wheel Hanger Ball Bearing, 250 lbs, HD Series (2-Pack)	25.06	027851	100
---	-------	--------	-----



9881CS Rubber Bumper, CS/HD Series	1.32	027847	100
--	------	--------	-----



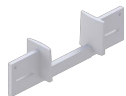
9639CS Mullion Converging Kit, CS/HD Series	31.45	027848	20
---	-------	--------	----



9634CS 1-3/4" Adapter Kit, CS/HD Series	11.02	027841	20
---	-------	--------	----



9883CS Floor Guide, CS/HD Series	7.52	027842	100
--	------	--------	-----



9889CS 1-3/8" Pocket Guide, CS/HD Series	10.21	027834	20
--	-------	--------	----

1. For additional components, refer to component section. 2. U/M is each unless otherwise noted. 4. Packaged sets and parts bags are available with optional components by special quotation.



Sliding Door Hardware - 9878CS Packaged Sets - Pocket Door



Description	Finish	2022 List	Stock No.	Case Qty.
9878CS Packaged Sets up to 150 lbs. (68 kg) per door.				
Contents: track and parts bag. For 1-3/8" (35mm) and 1-3/4" (44mm) thick doors. Heavy duty Aluminum box track & hardware				
9878CS-72 - Pocket set for 3' door	72" (1829 mm)	107.36	16371	6
9878CS-96 - Pocket set for 4' door	96" (2438 mm)	128.60	16365	
Components Description				
9805		20.67	02860	100
4 Wheel Hanger 150 lbs. CS Series (2-pack)				
9806		25.06	027851	100
4 Wheel Ball Bearing 250 lbs.				
9881CS		1.32	027847	100
Rubber Bumper				
9883CS		7.52	027842	100
2-Piece Door Guide, CS/HD Series				






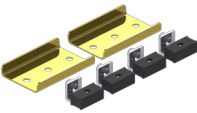

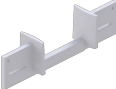
Sliding Door Hardware - 9850HD-102 | 9850HD-96 | 9852HD-84 | 9852HD-80 - 9800 Heavy-Duty Series Pocket Door Frame Kits



Description	Door Height	Finish	2022 List	Stock No.	Case Qty.
9850HD- 102 For 4'0" wide x 8'6" high doors, up to 250102" (2591 mm) lbs.(113 kg) per door.		AL	591.63	027870	1
9850HD - 96 For 4'0" wide x 8'0" high doors, up to 25096" (2032 mm) lbs.(113 kg) per door.		AL	507.45	026725	1
9852HD - 84 For 3'0" wide x 7'0" high doors, up to 25084" (2134 mm) lbs.(113 kg) per door (for 2' X 6' Walls).		AL	382.10	027858	1
9852HD- 80 For 3'0" wide x 6'8" high doors, up to 25080" (2032 mm) lbs.(113 kg) per door (for 2' X 6' Walls).		AL	357.05	027865	1

Note: 9850HD Pocket Door Frame Kits Contents: 2"x4" Header and Track Assembly, 3 pairs of Split Studs, 3 each Floor Plates for 1-3/8" thick doors, 3 each Floor Plates for 1-3/4" thick doors, 6 shims, 2 End Brackets, 2 each (9806) rollers with hanger plates, one each (9881CS) Bumper, and 1 pair (9883CS) Floor Guide. For 1-3/8" (35 mm) and 1-3/4" (44 mm) thick doors.

Note: 9852HD Pocket Door Frame Kits Contents: 2"x6"Header and Track Assembly, 2 pairs of Split Studs, 2 each 4" Floor Plates, 2 End Brackets, 2 each (9806) rollers with hanger plates, 1each (9881CS)Bumper, and 1 pair (9883CS) Floor Guide. For 1-3/8" (35 mm) and 1-3/4" (44 mm) thick doors.

Replacement Description					
	1-269-8651		80.30	027859	20
Soft Close Mechanism. Compatible with all Commercial & Heavy-Duty Pocket Door Framed Kits.					
	9806		25.06	027851	100
4-Wheel Hanger Ball Bearing, 250 lbs, HD Series (2-Pack)					
	9881CS		1.32	027847	100
Rubber Bumper, CS/HD Series					
	9639CS		31.45	027848	20
Mullion Converging Kit, CS/HD Series					
	9634CS		11.02	027841	20
1-3/4" Adapter Kit, CS/HD Series					
	9883CS		7.52	027842	100
Floor Guide, CS/HD Series					
	9889CS		10.21	027834	20
1-3/8" Pocket Guide, CS/HD Series					

1. For additional components, refer to component section. 2. U/M is each unless otherwise noted. 4. Packaged sets and parts bags are available with optional components by special quotation.

Sliding Door Hardware - 9878HD Packaged Sets - Pocket Door



Description	Finish	2022 List	Stock No.	Case Qty.
-------------	--------	-----------	-----------	-----------

9878HD Packaged Sets for doors up to 250 lbs. (113 kg) per door.

For doors 1-3/8" (35 mm) thick and up.

9878HD-72 - Pocket set for 3' door	72" (1829 mm)	174.14	016352	
9878HD-96 - Pocket set for 4' door	96" (2438 mm)	232.02	016353	

Components Description

9806 4 Wheel Ball bearing Hanger, 250 lbs, HD Series (2-Pack)		52.43	018292	10
---	--	-------	--------	----

9881CS Rubber Bumper		1.32	027847	100
--------------------------------	--	------	--------	-----

9883CS 2-Piece Door Guide set with screws		7.52	027842	100
---	--	------	--------	-----



Sliding Door Hardware - 9901 Packaged Sets - Pocket Door



Description	Finish	2022 List	Stock No.	Case Qty.
-------------	--------	-----------	-----------	-----------

9901 Packaged Sets for doors up to 250 lbs. (113 kg)

Contents: 9821 track, 9895 parts bag

Extra heavy duty Aluminum box track & hardware for 1-3/8"(35mm) and 1-3/4"(44mm) thick doors.

9901-72 - Pocket set for 3' doors	72" (1829 mm)	182.91	019361	6
9901-96 - Pocket set for 4' doors	96" (2438 mm)	204.71	019358	
9821-59 - Aluminum box track	59" (1499 mm)	AL 39.90	019084	10
9821-71 - Aluminum box track	71" (1803 mm)	AL 49.42	019062	
9821-96 - Aluminum box track	96" (2438 mm)	AL 65.90	019061	
9821-144 - Aluminum box track	144" (3658 mm)	AL 95.46	019050	

Parts Description

9895 - 2 ea. 9825 hangers w/ top mount plate, 1 ea. 9883 guide set, 1 ea. 9881 bumper	90.20	019408	10
---	-------	--------	----

Components Description

9825 Ball Bearing Hanger w/ Top Mount Plate	45.10	135321	10
9881 Rubber Bumper	1.32	096685	80
9883 2-Piece Door Guide set with screws	4.82	096686	100



1. For additional components, refer to component section. 2. U/M is each unless otherwise noted. 4. Packaged sets and parts bags are available with optional components by special quotation.



Sliding Door Hardware - 9710HD Packaged Sets- Wall-Mount



Description	Finish	2022 List	Stock No.	Case Qty.	
9710 Packaged Sets for heavy duty single doors and bi-parting doors up to 250 lbs. (113kg) Contents of Packaged Sets: track, fascia, end caps and 9806 parts bags. (Heavy duty aluminum wall-mount box track, anodized fascia, end caps and hardware for 1"(25mm and 1-3/4"(44mm) thick doors.					
9710HD-72 - Wall-Mount Packaged Set for 1 Door	72" (1829 mm)	CLA	304.12	10625	1
9710HD-96 - Wall-Mount Packaged Set for 1 Door	96" (2438 mm)	CLA	350.91	10616	
9710HD-144 - Wall-Mount Packaged Set for 1 or 2 Doors	144" (3658 mm)	CLA	584.81	10612	
9710-60 - Wall-Mount Packaged Set for 1 Door	60" (1524 mm)	DBA	358.24	160961	1
9710-72 - Wall-Mount Packaged Set for 1 Door	72" (1829 mm)	DBA	380.16	160962	
9710-96 - Wall-Mount Packaged Set for 1 Door	96" (2438 mm)	DBA	438.61	160963	
9710-144 - Wall-Mount Packaged Set for 1 or 2 Doors	144" (3658 mm)	DBA	744.66	160989	

Parts Description	2022 List	Stock No.	Case Qty.
9806 - Parts Bag: 2 ea. hangers w/ top mount plate, 1 ea. bottom door guide, 4 ea bumper stops	25.06	027851	10

Components Description	2022 List	Stock No.	Case Qty.	
9115 Bottom Door Guide	US2C	11.46	096522	50
9815 Bumper Stop		9.21	096648	20
9827 4 Wheel Ball Bearing Hanger w/ Top Mount Plate		52.43	018292	10



Sliding Door Hardware - Components



Description	Finish	2022 List	Stock No.	Case Qty.
330D	US3	15.22	086840	20
Pocket Door Latch	US5	15.22	086841	
Material: Cast brass	US10B	18.98	056768	
Fits: 1-3/8" - 1-3/4" door Size:	US15	15.22	078972	
2-3/4" x 2-1/2" Finger Pull	US15A	16.22	054061	
Extends: 1-3/8" Fasteners: #6 x	US19	9.65	054570	
5/8" OPHWS	US26	15.22	086837	
	US26D	16.22	086838	



330L	US3	17.79	143162	20
Privacy Pocket Door Latch	US5	18.23	143164	
Material: Brass	US10	12.34	014365	
Size: 2-3/4" x 2-1/2"	US10B	21.55	143158	
Finger Pull Extends: 1-3/8"	US15	18.35	143159	
Strike: 1" x 2-1/4"	US15A	18.23	143160	
1-3/8" doors	US19	18.23	143166	
Fasteners: #6 x 5/8" OPHWS; #6 x 3/4" FPHWS	US26	17.79	143167	
	US26D	18.73	143161	



330M	US3	18.79	143172	20
Privacy Pocket Door Latch	US5	32.57	143178	
Material: Brass	US10	43.35	143168	
Size: 2-3/4" x 2-1/2"	US10B	19.92	143169	
Finger Pull Extends: 1-3/8"	US15	43.35	143173	
Strike: 1" x 2-1/4"	US15A	43.35	143174	
1-3/4" doors	US19	43.35	143175	
Fasteners: #6 x 5/8" OPHWS; #6 x 3/4" FPHWS	US26	18.79	143170	
	US26D	17.73	143171	



1741	US2D	2.51	029658	50
Full Mortise Plain Bearing				
Hinges with Screws				
3-1/2" x 3-1/2"				



2610	US3	1.25	013049	500
Finger Pull	US4	1.25	071953	
Material: Brass	US5	1.25	067282	
Overall Diameter: 31/32"	US10A	1.25	068711	
Finger Pull Diameter: 3/4"	US15	1.25	040589	
Pull Clearance: 5/16"	US15A	1.25	040590	
Projection: 1/32"	US26	1.25	013047	
	US26D	1.25	071169	










2620	US3	2.07	013081	50
Round Flush Pull	US4	2.07	072997	
Material: Brass	US5	2.07	072148	
Overall Diameter: 31/32" Finger	US10A	2.07	072534	
Pull Diameter: 1-11/16" Pull	US15	2.07	072624	
Clearance: 11/32" Projection:	US15A	2.07	072158	
5/64"	US26	2.07	072554	
	US26D	2.07	075322	

1. For additional components, refer to component section. 2. U/M is each unless otherwise noted. 4. Packaged sets and parts bags are available with optional components by special quotation.



Sliding Door Hardware - Components

	Description	Finish	2022 List	Stock No.	Case Qty.	
	2630	US3	5.39	051919	50	
	Round Flush Pull	US4	5.39	073783		
	Material: Brass	US5	5.39	053163		
	Overall Diameter: 2-7/16" Finger	US10A	5.39	073053		
	Pull Diameter: 2-1/16" Pull	US15	5.39	073056		
	Clearance: 11/32" Projection:	US15A	5.39	005307		
	3/32"	US26	5.39	023430		
		US26D	5.39	023431		
	2640	US3	7.58	096760	50	
	Oblong Flush Pull	US4	7.58	075056		
	Material: Brass	US5	7.58	074270		
	Size: 1-5/16" x 2-3/4"	US10A	7.58	074533		
	Cup Clearance: 5/16" Fasteners:	US15	7.58	074711		
	#6 x 5/8" OPHWS	US15A	7.58	074350		
		US26	7.58	026751		
		US26D	7.58	074664		
	9101-60	60" (1524 mm)	AL	70.78	023278	5
	I-beam track, heavy duty aluminum	72" (1829 mm)	AL	88.64	096508	
		84" (2134 mm)	AL	105.61	096509	
		96" (2438 mm)	AL	112.88	096707	
		120" (3048 mm)	AL	147.64	096511	
		144" (3658 mm)	AL	177.65	096512	
		192" (4877 mm)	AL	235.84	096513	
	9102	US2C	32.26	135310	20	
	2 Wheel Hanger					
	9105	US2C	48.42	135312	40	
	4 Wheel Hanger					
	9109		73.54	135690	10	
	Parts Bag: 2 ea. 9102 two wheel hangers, 1 ea. 9115 floor guide					
	9111	US2C	5.32	096516	20	
	Bottom Roller Guide					
	9113	AL	69.59	135314	10	
	Stop					
	9114-72 - Bottom Guide Track- 72"	72" (1829 mm)	AL	52.43	096519	5
	9114-96 - Bottom Guide Track- 96"	96" (2438 mm)	AL	69.59	096520	5
	9114-144 - Bottom Guide Track- 144"	144" (3658 mm)	AL	104.55	096521	5
	9115	US2C	11.46	096522	50	
	Bottom Door Guide					



Sliding Door Hardware - Components



Description	Finish	2022 List	Stock No.	Case Qty.
9121 Roller Guide - For use with 9122 guide	US2C	21.49	137181	20
9122-48 - Bottom Guide Channel - 3/4" wide x 5/8" tall	AL	27.31	096557	5
9122-60 - Bottom Guide Channel - 3/4" wide x 5/8" tall	AL	34.39	096558	5
9122-72 - Bottom Guide Channel - 3/4" wide x 5/8" tall	AL	40.34	096559	5
9122-96 - Bottom Guide Channel - 3/4" wide x 5/8" tall	AL	53.49	096560	5
9122-120 - Bottom Guide Channel - 3/4" wide x 5/8" tall	AL	67.40	096605	5
9122-132 - Bottom Guide Channel - 3/4" wide x 5/8" tall	AL	73.54	096606	5
9122-144 - Bottom Guide Channel - 3/4" wide x 5/8" tall	AL	80.43	096607	5
9122-192 - Bottom Guide Channel - 3/4" wide x 5/8" tall	AL	107.36	096608	5
9128 Bottom Pivot Bolt and Door Plate with Bottom Pivot Floor Bracket	US2C	51.11	023150	10
9129 Parts Bag: 2 ea. 9105 4-wheel hangers, 1 ea. 9115 floor guide		108.49	135315	10
9169 Top Pivot Assembly	US2C	11.46	096635	10
9200 Hanger - Small 3/8" (10 mm) offset A		2.38	016575	100
9201 Hanger - Large 11/16" (18 mm) offset B	US2C	2.38	096561	100
9202 Twin Wheel Hanger - Large 11/16" (18 mm) offset B	US2C	4.32	096562	100
9220 Non-Mortise Bi-Fold Hinge with Screws	US2D	2.38	099119	600
9262 - Keyed Lock for pocket door applications	US3 US26D	56.44 57.88	098994 016724	6
9264 - Keyed Lock for bifold applications	US3	48.42	016725	6
Keyed Lock - Keyed Alike	US3	48.42	002801	



1. For additional components, refer to component section. 2. U/M is each unless otherwise noted. 4. Packaged sets and parts bags are available with optional components by special quotation.



Sliding Door Hardware - Components

Description	Finish	2022 List	Stock No.	Case Qty.
 9268 - Keyed Lock for bypass applications Keyed Lock - Keyed Alike	US3	54.43	016726	6
	US26D	55.44	099251	
	US3	54.43	002804	6
	US26D	55.44	002802	
 9351 Door Guide		3.45	096563	50
 9353 Adjustable Door Guide		3.45	096564	20
 9354 Carpet Riser	US2D	2.38	096565	50
 9400 Cam Adjustable Hanger - Small 3/8" (10 mm) offset A	US2C	4.32	017417	100
 9401 Cam Adjustable Hanger - Large 11/16" (18 mm) offset B	US2C	4.32	096566	100
 9540 Parts Bag: 4 ea. 9401 hangers, 2 ea. 2610 pulls, 1 ea. 9351 guide		12.34	017419	10
 9544 Parts Bag: 4 ea. 9202 hangers, 2 ea. 2630 pulls, 1 ea. 9351 guide Used to increase door weight capacity to 75 lbs		18.29	017035	10
 9558 Wood Knob Knob Diameter: 1-1/2" Base Diameter: 15/16" Fasteners: #8 x 1-3/4" PPHWS	Wood	2.38	096567	100
 9559 Aligner	US2D	1.32	096568	200
 9566 Knob Material: Zinc Knob Diameter: 1-1/4" Projection: 1" Fasteners: #8 - 32 x 2" PPHMS; #8 - 32 x 1-3/4" PPHMS	US3 US4 US10A US10B US15 US15A US26 US26D	8.83 9.90 9.90 9.90 9.90 9.90 8.83 9.90	099824 098635 098634 098633 098632 098629 098628 098627	100

1. For additional components, refer to component section. 2. U/M is each unless otherwise noted. 4. Packaged sets and parts bags are available with optional components by special quotation.



Sliding Door Hardware - Components

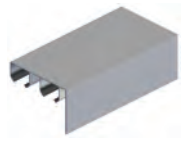


Description	Finish	2022 List	Stock No.	Case Qty.	
9567 Rose - For use with 9566 knob Material: Zinc Base Diameter: 1-3/4" Projection: 15/32" Fasteners: #8 - 32 x 2" PPHMS; #8 - 32 x 1-3/4" PPHMS	US3 US10A US10B US15 US26 US26D	4.13 4.13 4.13 4.13 4.13 4.45	099825 098625 098624 098623 098621 098620	100	
9569 Parts Bag: 1 ea. 9572 hanger w/ top mount plate, 9618 pivot set, 9559 aligner, 9558 knob and 9815 bumper stop, 3 ea. 9220 hinges		30.38	016913	10	
9572 4-Wheel Hanger w/ Top Mount Plate	US2D	15.35	135316	20	
9573 Spacer Kit - 3/8" use with 9821 track - For doors 1-3/4" thick		6.39	019014	5	
9574 Spacer Kit - For use with 9801 - For doors 1-3/8" and 1-3/4" thick		6.39	015991	5	
9575 Parts Bag: 4 ea. 9572 hangers w/ top mount plate, 1 ea. 9909 guide		35.45	137167	5	
9601-71 - Aluminum box track	71" (1803 mm)	AL	31.45	096578	
9601-84 - Aluminum box track	84" (2134 mm)	AL	42.47	045141	
9601-96 - Aluminum box track	96" (2438 mm)	AL	48.73	096579	
9601-120 - Aluminum box track	120" (3048 mm)	AL	54.43	096580	
9601-144 - Aluminum box track	144" (3658 mm)	AL	64.39	096581	
9602-46 - Double box track only, heavy duty aluminum	46" (1168 mm)	AL	42.47	096582	5
9602-58 - Double box track only, heavy duty aluminum	58" (1473 mm)	AL	52.43	096583	
9602-70 - Double box track only, heavy duty aluminum	70" (1778 mm)	AL	60.51	096584	
9602-94 - Double box track only, heavy duty aluminum	94" (2388 mm)	AL	78.43	096585	
9602-118 - Double box track only, heavy duty aluminum	118" (2997 mm)	AL	84.52	096586	
9602-142 - Double box track only, heavy duty aluminum	142" (3607 mm)	AL	112.56	096587	

1. For additional components, refer to component section. 2. U/M is each unless otherwise noted. 4. Packaged sets and parts bags are available with optional components by special quotation.



Sliding Door Hardware - Components



Description	Finish	2022 List	Stock No.	Case Qty.
9603-48 - Aluminum box track with fascia	AL	78.43	135288	5
9603-60 - Aluminum box track with fascia	AL	94.52	135289	
9603-72 - Aluminum box track with fascia	AL	112.56	135290	
9603-96 - Aluminum box track with fascia	AL	146.77	135291	
9603-120 - Aluminum box track with fascia	AL	183.79	029359	
9603-144 - Aluminum box track with fascia	AL	225.94	029360	



9605 4-Wheel Hanger w/ Top Mount Plate	US2D	7.20	135317	20
--	------	------	--------	----



9606 4-Wheel Ball Bearing w/ Top Mount Plate	US2D	22.36	135318	20
--	------	-------	--------	----



9610 Replacement Top Mount Plate	US2C	2.38	142410	20
--	------	------	--------	----



9618 Pivot Set - For 9570 series	-	10.46	137182	10
--	---	-------	--------	----



9632 Pocket Parts Bag -125 lbs (57 kg) Consists of: 2 ea. 9605 hangers w/ top mount plate, 1 ea. 9883 guide set, 1 ea. 9881 bumper		42.47	135322	10
---	--	-------	--------	----



9633 Parts Bag : 2 ea. 9606 ball bearing hangers w/ top mount plate, 1 ea. 9883 guide set, 1 ea. 9881 bumper		70.41	135323	10
--	--	-------	--------	----



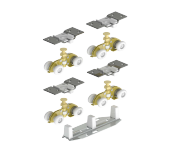
9634 Pocket Door Adapter Kit For 1-3/4" (45 mm) thick doors		11.02	097519	10
--	--	-------	--------	----



9639 Double Pocket Door Adapter Kit Joins two frames in middle of doorway	US2C	31.45	096595	1
---	------	-------	--------	---



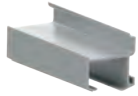
9679 4 ea. 9605 hangers w/ top mount plate, 1 ea. 9909 guide		57.33	137179	20
--	--	-------	--------	----



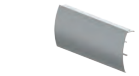
9680 4 ea. 9606 ball bearing hangers w/ top mount plate, 1 ea. 9909 guide		116.57	136357	20
---	--	--------	--------	----



Sliding Door Hardware - Components



Description		Finish	2022 List	Stock No.	Case Qty.
9703-60 - Wall-Mount Track-mill finish	60" (1524 mm)	ALM	86.00	160984	5
9703-72 - Wall-Mount Track-mill finish	72" (1829 mm)	ALM	91.27	160985	
9703-96 - Wall-Mount Track-mill finish	96" (2438 mm)	ALM	105.30	160986	
9703-144 - Wall-Mount Track-mill finish	144" (3658 mm)	ALM	202.01	160988	
9703-60 - Wall-Mount Track- dark bronze anodized	60" (1524 mm)	DBA	132.92	160993	5
9703-72 - Wall-Mount Track- dark bronze anodized	72" (1829 mm)	DBA	141.57	160994	
9703-96 - Wall-Mount Track- dark bronze anodized	96" (2438 mm)	DBA	163.55	160995	
9703-144 - Wall-Mount Track- dark bronze anodized	144" (3658 mm)	DBA	313.70	160996	
9704-60 - Wall-Mount Fascia- clear anodized	60" (1524 mm)	CLA	111.81	161003	5
9704-72 - Wall-Mount Fascia- clear anodized	72" (1829 mm)	CLA	118.70	161004	
9704-96 - Wall-Mount Fascia- clear anodized	96" (2438 mm)	CLA	136.97	161005	
9704-144 - Wall-Mount Fascia- clear anodized	144" (3658 mm)	CLA	263.21	161006	
9704-60 - Wall-Mount Fascia-dark bronze anodized	60" (1524 mm)	DBA	172.82	161009	5
9704-72 - Wall-Mount Fascia-dark bronze anodized	72" (1829 mm)	DBA	184.35	161010	
9704-96 - Wall-Mount Fascia-dark bronze anodized	96" (2438 mm)	DBA	212.35	161011	
9704-144 - Wall-Mount Fascia-dark bronze anodized	144" (3658 mm)	DBA	406.78	161012	
9705 - End Cap Set- anodized		CLA	87.76	161013	10
		DBA	105.30	161014	10
9709-60 - Fascia only, 2-3/4" (70 mm) wide	60" (1524 mm)	AL	66.52	023322	
9709-72 - Fascia only, 2-3/4" (70 mm) wide	72" (1829 mm)	AL	76.36	096603	
9709-96 - Fascia only, 2-3/4" (70 mm) wide	96" (2438 mm)	AL	86.51	096604	
9711			86.44	161015	10
Parts Bag: 2 ea. 9827 hangers w/ top mount plate, 1 ea. 9115 bottom door guide, 4 ea. 9815 bumper stops					
9742			110.62	137418	10
Parts Bag: 2 ea. 9816 hangers w/ top mount plate, 1 ea. 9883 guide set, 1 ea. 9881 bumper					
9801-72 - Box Track, Heavy Duty Aluminum	72" (1829 mm)	AL	64.39	096641	5
9801-96 - Box Track, Heavy Duty Aluminum	96" (2438 mm)	AL	86.51	096642	
9801-120 - Box Track, Heavy Duty Aluminum	120" (3048 mm)	AL	108.49	096643	
9801-144 - Box Track, Heavy Duty Aluminum	144" (3658 mm)	AL	141.63	096644	
9801-192 - Box Track, Heavy Duty Aluminum	192" (4877 mm)	AL	188.67	096645	



1. For additional components, refer to component section. 2. U/M is each unless otherwise noted. 4. Packaged sets and parts bags are available with optional components by special quotation.



Sliding Door Hardware - Components



Description	Finish	2022 List	Stock No.	Case Qty.
9803-60 - Double Box Track w/ Fascia, Heavy Duty Aluminum	AL	168.75	022483	2
9803-72 - Double Box Track w/ Fascia, Heavy Duty Aluminum	AL	200.82	022484	
9803-96 - Double Box Track w/ Fascia, Heavy Duty Aluminum	AL	268.85	022485	
9803-120 - Double Box Track w/ Fascia, Heavy Duty Aluminum	AL	335.12	022486	
9803-144 - Double Box Track w/ Fascia, Heavy Duty Aluminum	AL	402.46	022487	
9809-72 - Aluminum Fascia, 3-7/8" (98 mm) high	AL	119.58	096646	10
9809-96 - Aluminum Fascia, 3-7/8" (98 mm) high	AL	156.60	096647	
9810-46 - Aluminum Track	AL	20.42	019702	10
9810-58 - Aluminum Track	AL	24.37	019703	
9810-70 - Aluminum Track	AL	29.57	019704	
9810-93 - Aluminum Track	AL	38.27	019705	
9810-120 - Aluminum Track	AL	48.42	016570	
9810-144 - Aluminum Track	AL	64.39	026064	
9814 Parts bag: 2 ea. 9400 hangers, 2 ea. 9401 hangers, 2 ea. 2610 pulls, 1 ea. 9353 guide set. For 1" to 1-1/8" doors, specify 9841 parts bag.		19.29	016772	10
9815 Bumper Stop		9.21	096648	20



Sliding Door Hardware - Components



Description	Finish	2022 List	Stock No.	Case Qty.
9820-48 - Aluminum track with 1-3/4" grooved fascia	AL	37.52	000461	5
9820-60 - Aluminum track with 1-3/4" grooved fascia	AL	46.54	000462	
9820-72 - Aluminum track with 1-3/4" grooved fascia	AL	54.43	000463	
9820-84 - Aluminum track with 1-3/4" grooved fascia	AL	73.54	028175	
9820-96 - Aluminum track with 1-3/4" grooved fascia	AL	80.43	099664	
9820-120 - Aluminum track with 1-3/4" grooved fascia	AL	92.64	000464	
9820-144 - Aluminum track with 1-3/4" grooved fascia	AL	120.64	000460	
9821-59 - Aluminum box track	AL	39.90	019084	10
9821-71 - Aluminum box track	AL	49.42	019062	
9821-96 - Aluminum box track	AL	65.90	019061	
9821-144 - Aluminum box track	AL	95.46	019050	
9824 4-Wheel Hanger w/ Top Mount Plate		35.89	135320	20
9825 4-Wheel Ball Bearing Hanger w/ Top Mount Plate		45.10	135321	10
9827 4-Wheel Ball bearing Hanger w/ Top Mount Plate		52.43	018292	10
9828 Heavy Duty Pivot Set with 9815 Bumper Stop		65.21	018286	10
9841 Parts Bag: 4 ea. 9402 hangers, 2 ea. 9865 pulls, 1 ea. 9351 guide		10.46	099665	10
9842 Parts Bag: 4 ea. 9402 hangers, 2 ea. 9630 pulls, 1 ea. 9351 guide		14.34	017424	10



1. For additional components, refer to component section. 2. U/M is each unless otherwise noted. 4. Packaged sets and parts bags are available with optional components by special quotation.



Sliding Door Hardware - Components



Description	Finish	2022 List	Stock No.	Case Qty.
9843 Parts Bag: 4 ea. 9401 hangers, 2 ea. 9865 pulls, 1 ea. 9351 guide. Used to increase door weight capacity to 75 lbs		16.35	016912	10
9865 Plastic Pull Overall Diameter: 1-31/32" Finger Pull Diameter: 1-19/32" Pull Clearance: 11/32" Projection: 5/64"	Plastic	1.32	098993	50
9877 Door Guide, 2 pieces required per door		2.38	016843	50
9880 Stop	US2C	2.38	096684	10
9881 Rubber Bumper		1.32	096685	80
9882 Pocket Door Edge Pull Material: Brass Finger Pull Extends: 3/4" Faceplate: 3/4" x 3-7/8" Fasteners: #6 x 5/8" FPHWS	US3 18.85 US4 22.80 US10 18.85 US10B 22.80 US26 22.80 US26D 22.80	049582 049583 049578 049580 049579 049581	100	
9883 2-Piece Door Guide Set with Screws		4.82	096686	100
9884 Pocket Door Edge Pull Material: Zinc Finger Pull Extends: 1-1/16" Faceplate: 21/32" x 3-1/2" Fasteners: #6 x 5/8" FPHWS	US3	10.02	099056	40
9889 1-Piece Guide		2.38	096687	20



Sliding Door Hardware - Components



Description	Finish	2022 List	Stock No.	Case Qty.
9892 Parts Bag: 4 ea. 9824 4-wheel hangers w/ top mount plate, 1 ea. 9909 guide, 1 ea. 9573 spacer kit		68.33	019421	10



9893 Parts Bag: 4 ea. 9825 4-wheel ball bearing hangers w/ top mount plate, 1 ea. 9909 guide, 1 ea. 9573 spacer kit		127.28	019418	10
--	--	--------	--------	----



9894 Parts Bag: 1 ea. 9825 4-wheel ball bearing hanger w/ top mount plate, 1 ea. 9828 pivot set with 9815 bumper stop, 9559 aligner		113.57	019435	10
---	--	--------	--------	----



9895 Parts Bag: 2 ea. 9825 4-wheel ball bearing hangers w/ top mount plate, 1 ea. 9883 guide, 1 ea. 9881 bumper		90.20	019408	10
--	--	-------	--------	----



9900 Reversible Side Mount Bracket	US2C	9.21	003775	20
--	------	------	--------	----



9909 Heavy Duty Adjustable Door Guide From 3/4" to 1-3/4" (19 mm to 44 mm)	US2C	10.46	097528	20
---	------	-------	--------	----

1. For additional components, refer to component section. 2. U/M is each unless otherwise noted. 4. Packaged sets and parts bags are available with optional components by special quotation.



Sliding Door Hardware - 9400 Series Stainless Barn Door



9432 Packaged Sets - Top Mount Stick 2m SS Round Rail

Includes stainless steel track with two end caps, hangers with wall brackets, one bottom door guide, two track stops, mounting and installation hardware

Description	Finish	2022 List	Stock No.	Case Qty.
9432-78 - Top Mount Stick 2m (78-3/4") SS Round Rail	32D	677.45	183635	1
9432-96 - Top Mount Stick 2m (96-3/4") SS Round Rail	32D	787.13	183636	1



9436 Packaged Sets - Face Mount Strap Stick 2m SS Round Rail

Includes stainless steel track with two end caps, hangers with wall brackets, one bottom door guide, two track stops, mounting and installation hardware

9436-78 - Face mount Strap Stick 2m (78-3/4") SS Round Rail	32D	748.42	183643	1
9436-96 - Face mount Strap Stick 2m (96-3/4") SS Round Rail	32D	780.68	183644	1



Sliding Door Hardware- Stainless Barn Door Components



Description	Finish	2022 List	Stock No.	Case Qty.
1-269-8650 Spring Loaded Cushion Stop for 9400 Barn Door Series I	32D	34.45	86376	1
1-269-8663 Round Rail Connector SS304 satin nickel	32D	42.53	181901	1
1-269-8664 Flat Rail Connector SS304 satin nickel	32D	42.53	181902	1
1-269-8665 Tool set for 05WG; 06WG; 07WG (round rail)		4.51	183156	1
1-269-8666 Tool set for 01W; 02W (round rail)	32D	4.51	183163	1
1-269-8667 End Cap	32D	11.40	183164	1
1-269-8668 Guide for wood door		7.14	183165	1
1-269-8669 Door Stop	32D	49.67	183166	1
1-269-8670 Guide for glass door	32D	35.52	183167	1
1-269-8671 Top Mount Stick Sliding Door Roller for Wood, SS304 Satin	32D	177.27	183168	1
1-269-8672 Top Mount Dual Wheel Sliding Door Roller for Wood, SS304 Satin	32D	496.23	183170	1
1-269-8673 Top Mount Spoke Wheel Sliding Door Roller for Wood, SS304 Satin	32D	425.33	183171	1
1-269-8674 Strap Stick Sliding Door Roller for Wood and Glass, SS304 Satin	32D	354.48	183172	1
1-269-8675 Strap Dual Wheel Sliding Door Roller for Wood and Glass, SS304 Satin	32D	602.60	183173	1

1. For additional components, refer to component section. 2. U/M is each unless otherwise noted. 4. Packaged sets and parts bags are available with optional components by special quotation.





Description	Finish	2022 List	Stock No.	Case Qty.
1-269-8676 Strap Triangle Sliding Door Roller for Wood and Glass, SS304 Satin	32D	425.33	183176	1
1-269-8677 Flat Rail Stick Sliding Door Carrier for Wood SS304 Satin	32D	237.53	183179	1
1-269-8678 Flat Rail Door Stopper Left, SS304 Satin	32D	70.91	183180	1
1-269-8679 Flat Rail Door Stopper Right, SS304 Satin	32D	70.91	183181	1
1-269-8680 Flat Rail Anti Jump	32D	4.26	183182	1



eConestoga Barn Door Hardware Series



Description	Finish	2022 List	Stock No.
9456-72 Flat Rail Steel Black Top Mount 72" Track Kit Includes Track	BLK	274.24	96467
9456-96 Flat Rail Steel Black Top Mount 96" Track Kit Includes Track	BLK	306.50	96466
9457-72 Flat Rail Steel Black 3" Hook 72" Track Kit Includes Track	BLK	306.50	96427
9457-96 Flat Rail Steel Black 3" Hook 96" Track Kit Includes Track	BLK	338.76	96388
1-269-8649 Flat Rail Track Connector	BLK	16.16	96361
1-269-8648 72" Rail Only	BLK	114.19	96355
1-269-8647 96" Rail Only	BLK	129.04	96353
1-269-8646 Flat Rail Soft Close Add On	BLK	80.68	23353
1-269-8652 9456 e-Conestoga - Top Mount Hanger	BLK	43.72	22541
1-269-8653 e-Conestoga Door Stop	BLK	14.60	22523
1-269-8654 e-Conestoga Track Support	BLK	8.77	22524
1-269-8655 e-Conestoga Floor Guide (One Piece)	BLK	8.77	22525
1-269-8656 e-Conestoga Anti-Jump Pin	BLK	8.77	22526
1-269-8657 e-Conestoga Floor Guide (Two Piece)	BLK	14.60	22520
1-269-8658 e-Conestoga 72" Track	BLK	58.32	22511
1-269-8659 9457 e-Conestoga - Face Mount Hanger	BLK	49.55	22502
1-269-8660 e-Conestoga 96" Track	BLK	75.79	22503

1. For additional components, refer to component section. 2. U/M is each unless otherwise noted. 4. Packaged sets and parts bags are available with optional components by special quotation.



How to Order

9458



2D



BLK



For 1-3/8" (35mm) to 1-3/4"(40mm) thick doors standard.

- Non-handed.
- ADA Compliant thumb turn for commercial applications.
- 2-1/4" or 3-1/2" backset options (see specifications for corresponding wall thickness).
- Drive in bolt casing diameter: 1" (25mm).
- Lock bolt: 1/2" (13mm) diameter, stainless Steel material.
- Lock bolt has 1" projection allowing up to 1/2" door to wall gap. Extra spacer ring accommodates up to 3/4" gap between barn door and wall.
- 1-1/4" diameter spring-loaded dust proof strike provides ample space to receive 1/2" bolt, allows easy locking from privacy side. Strike mounted in barn door for standard door.



Description	Finish	2022 List	Stock No.
94582D-32D Round ADA TT Stainless 2-1/4" Backset	32D	228.14	086683
94582D-10B Round ADA TT Oil Rubbed Bronze 2-1/4" Backset	10B	228.14	086672
94582D-BLK Round ADA TT Black 2-1/4" Backset	BLK	228.14	086664
945835-32D Round ADA TT Stainless Steel 3-1/2" Backset	32D	228.14	086663
945835-10B Round ADA TT Oil Rubbed Bronze 3-1/2" Backset	10B	228.14	086657
945835-BLK Round ADA TT Black 3-1/2" Backset	BLK	228.14	086653



Description	Finish	2022 List	Stock No.
9459-32D Surface Jamb Barn Door Lock ADA 1-9/16" Thumb Lever	32D	241.97	35624
9459-BLK Surface Jamb Barn Door Lock ADA 1-9/16" Thumb Lever	BLK	241.97	35617