

**TABLE OF CONTENTS**

**A**

Actuators .....17-19

Adjustable Angle Bracket (2941/2942) .....6

Angle Brackets (2950 Series) .....9

Armature Mounting Plates (2950 Series)..... 7-8

Arm Assemblies (8300 Series) ..... 16

Arm Assemblies (8400 Series) ..... 13

**B**

Battery Backup (8300 Series) ..... 15

Bollard Posts ..... 19

**C**

Concealed Magnetic Contact ..... 11

Coordinator Mounting Bracket (2950 Series) .....8

Covers (8400 Series) .....13-14

**D**

Delayed Egress Magnetic Lock.....9-10

Door Prop Alarms.....3

Drop Plates (8400 Series) ..... 13

**E**

Egress Sensors.....11

Electric Strikes ..... 5-6

Emergency Door Release.....11

Exit Switches ..... 10

**F**

Filler Bars (2941/2942 Series) .....6

Filler Bars (2950 Series) .....8

**G**

Gang Boxes ..... 11

Glass Door Kits (2941/2942) .....6

Glass Door Kits (2950 Series) .....7

**H**

Handheld Programmer (8300 Series) ..... 16

**K**

Key Switch.....3

Keypads .....4

**L**

8300 Series Low Energy Power Operators .....15-16

8400 Series Low Energy Power Operators .....12-14

**M**

Magnetic Locks (2941/2942 Series).....6

Magnetic Locks (2950 Series) ..... 7-9

Magnetic Shear Locks (2961/2965) .....9

Magnetic Switches ..... 11

**O**

On-Board Power Supply (8400 Series) ..... 14

Outdoor Shrouds ..... 4,11

**P**

Power Supply ..... 3-4

Power Transfers ..... 11

Pressure Sense Bars ..... 10

Proximity Cards & Keys... ..... 4-5

Pedestrian Presence Sensors ..... 20

**R**

Relay & Door Sequencer ..... 20

Relay Board (8400 Series) ..... 14

**S**

Spacer Brackets (2950 Series) .....7

Spindles (8300 Series) ..... 16

Spindles (8400 Series) ..... 13

**T**

Top Jamb Kits (2941/2942) .....6

Top Jamb Kits (2950 Series) .....7

**U**

Universal Brackets (2950 Series) .....7

Underdesk Switch ..... 11

**W**

Wireless Receiver ..... 20

Wireless Transmitters ..... 20



# Electrified Products

---

## Cancellation Notification

Cancellation for made-to-order items must be communicated within 48 hours of order placement.

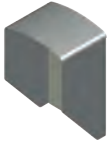




Description	Finish	2022 List	Stock No.	Case Qty.
<b>29KS ASD</b> Key switch - Alternate, SPDT	US32D	133.29	156361	12
<b>29KS MSD</b> Key switch - Momentary, SPDT	US32D	133.29	156367	12
<b>29KS ADD</b> Key switch - Alternate, DPDT	US32D	154.39	156366	12
<b>29KS MDD</b> Key switch - Momentary, DPDT	US32D	147.40	156369	12
Options: Red LED \$29.77 list price adder Green LED \$29.77list price adder 2 LED's \$37.17 list price adder				
<b>29EA NS</b> Door Prop Alarm, Single Gang Mount, No Key Switch		382.19	199478	
<b>29EA KS</b> Door Prop Alarm, Double Gang Mount, Key Switch		538.59	199474	
<b>29EA MKNC</b> Door Prop Alarm, Double Gang Mount, Mortise Cylinder Switch		486.40	199473	
<b>2901</b> For use with 4500 Series electric latch retraction battery back up option available		773.58	114909	
<b>2902</b> For use with 4500 Series electric latch retraction in a day/night mode of operation, battery backup option available		853.78	114990	
<b>2903</b> Provides 24 volt DC power for Fail Safe or Fail Secure locking devices and interface with building alarm controls, card readers, keypads, and other door controls.		666.73	114455	
<b>2904</b> Provides 24 volt DC power and control for opening with an electrified locking device and automatic door operator		706.77	136899	
<b>2908</b> Provides up to 1 amp of 12 or 24 volt DC power for all Hager Electrified Products except (ELR)		460.96	149931	1
<b>2909</b> Provides up to 2 amps of 12 or 24 volt DC power for all Hager Electrified Products		702.80	177262	



# Electrified Products



Description	Finish	2022 List	Stock No.	Case Qty.
<b>2910</b> Provides up to 4 amps of 12 or 24 volt DC power for all Hager Electrified Products		1,186.65	198523	
<b>2911</b> Provides up to 6 amps of 12 or 24 volt DC power for all Hager Electrified Products		1,385.35	198524	
<b>2-679-0661</b> 5 Amp hour battery backup for use with 2908 & 2909		61.77	153208	
<b>2-679-0662</b> 12 VDC output regulator module for use with 2908 & 2909		79.21	159033	
<b>2-679-0664</b> Universal Relay Module for use with 2908 & 2909		152.12	156812	
<b>2-679-0703</b> Electric Retraction Sequencer for use with 2908 & 2909		229.88	177267	
<b>2-679-0704</b> Access Control Module for use with 2908 & 2909		251.23	177263	
<b>2-679-0705</b> 16 AMP Power Booster for use with 2909 only		229.88	177264	
<b>2-679-0706</b> Power Supply Remote Monitoring Module for use with 2908 & 2909		334.02	177266	
<b>2-679-0708</b> Underdesk Push Switch		144.82	176289	
<b>2915</b> Heavy Duty Keypad - Indoor 500 users, 4-6 digit PIN codes 12/24V AC/DC	US3	315.37	150749	12
	US4	315.37	150750	
	US10B	315.37	150751	
	US26	315.37	150752	
	US32D	327.05	149619	
<b>2916</b> Heavy Duty Keypad - Outdoor 500 users, 4-6 digit PIN Codes 12/24V AC/DC	32D	320.68	173204	8
<b>2916P</b> Heavy Duty Keypad / Prox-Outdoor 500 users, 4-6 digit PIN codes 12/24V AC/DC	32D	881.68	189700	8
<b>2-679-0669</b> Shroud Cover	-	206.21	176541	
<b>2-679-0700</b> Surface Mount Box	-	41.46	172698	
<b>2-679-0021</b> HID ProxCard II, 25 Cards	-	245.56	149627	
<b>2-679-0022</b> HID ProxCard II, 100 Cards	-	981.99	153893	





Description	Finish	2022 List	Stock No.	Case Qty.
<b>2-679-0023</b> HID ProxKey, 10 Key fobs	-	196.45	150753	
<b>2-679-0024</b> HID ProxKey, 100 Key fobs Note: Prox cards and keys cannot be broken into smaller quantities	-	1,963.91	153894	
<b>2925</b> Electric Strike - 5/8" Latch Field Reversible Failsafe/Failsecure 12/24VDC 4-7/8" Sq Corner Stainless Steel Faceplate	US32D	176.02	149637	8
<b>2928 SC</b> Electric Strike - 1/2" to 3/4" latch Failsafe/Failsecure 12/24V AC/DC 4-7/8" Sq Corner Stainless Steel Faceplate	US32D	273.58	149638	8
<b>2928 RC</b> Electric Strike - 1/2" to 3/4" latch Failsafe/Failsecure 12/24V AC/DC 4-7/8" Radius Corner Faceplate	ALM	238.57	150333	8
<b>2928 6R</b> Electric Strike - 1/2" to 3/4" latch Failsafe/Failsecure 12/24V AC/DC 6-7/8" Radius Corner Faceplate	ALM	245.56	154920	8
<b>2928 7R</b> Electric Strike - 1/2" to 3/4" latch Failsafe/Failsecure 12/24V AC/DC 7-15/16" Radius Corner Faceplate	ALM	252.55	173212	8
Options: Keeper open/closed status \$66.94 list price adder Note: Additional finishes available for 2928. Inquire with Hager Customer Service for pricing.				
<b>2930 CYL</b> Electric Strike - Cylindrical lock Dual Voltage 12/24VDC ANSI/BHMA A156.31 Grade 1 UL Listed 3-hour fire rated Non-handed	US4 US10 US10B US26 US26D US32D	708.47 708.47 708.47 708.47 708.47 734.71	175715 156216 160255 175075 149642 149641	12
<b>2930 MOR</b> Electric Strike - Mortise lock Dual Voltage 12/24VDC ANSI/BHMA A156.31 Grade 1 UL Listed 3-hour fire rated Non-handed	US4 US10 US10B US26 US26D US32D	736.49 736.49 736.49 736.49 736.49 763.77	167282 160328 163253 149646 149645	12



## Electrified Products

Description	Finish	2022 List	Stock No.	Case Qty.
<b>2930 MDB</b>	US4	771.56		12
Electric Strike - Mortise lock w/ Deadbolt	US10	771.56	175970	
Dual Voltage 12/24VDC	US10B	771.56	176007	
ANSI/BHMA A156.31 Grade 1	US26	771.56		
UL Listed 3-hour fire rated	US26D	771.56	149649	
Non-handed	US32D	800.14	149648	
Options:				
Latchbolt Monitor (LBM)		\$97.44 list price adder		
Door secure monitor (DSM)		\$200.83 list price adder		
Deadbolt monitor - (DBM) LH		\$104.12 list price adder		
Deadbolt monitor - (DBM) RH		\$104.12 list price adder		
<b>2-679-0028</b>	-	55.60	153474	12
Buzzer 12/24V AC/DC operation for 2925/2928/2930				
<b>2-679-0029</b>	-	30.92	155676	12
Rectifier for AC operation for 2925/2928/2930				
<b>2941 Magnetic Lock</b>	ALM	315.70	55407	4
600 lb. holding force				
12/24VDC, field selectable				
<b>2942 Magnetic Lock</b>	ALM	378.85	55408	4
1200 lb. holding force				
12/24VDC, field selectable				





Description	Finish	2022 List	Stock No.	Case Qty.
<b>2951 Magnetic Lock</b> 1,650 lb. holding force Surface mount - single 12/24VDC	ALM	674.65	149701	2
	DBZ	769.10	153513	2
<b>2952 Magnetic Lock</b> 1,650 lb. holding force Surface mount - double 12/24VDC	ALM	1,311.67	152042	2
	DBZ	1,495.30	153528	2
<b>2953 Magnetic Lock</b> 1,200 lb. holding force Surface mount - single 12/24VDC	ALM	610.31	149707	2
	DBZ	695.75	153533	2
<b>2954 Magnetic Lock</b> 1,200 lb. holding force Surface mount - double 12/24VDC	ALM	1,234.54	152043	2
	DBZ	1,407.37	153538	2

Options: Adjustable timer input (TIME) \$101.12 (2-679-0109)  
 Door Position Sensor (DPS) \$63.54 (2-679-0110)\*  
 Magnetic Bond Sensor (MBS) \$95.30 (2-679-0111)\*  
 Anti Tamper Switch (ATS) \$77.48 (2-679-0112)

Note: Additional finishes available for 2951, 2952, 2953, 2954.  
 Inquire with Hager Customer Service for pricing.  
 \* Must order two for use with the 2952 or 2954



<b>2-679-0120</b> Top jamb kit 2951/2953	ALM	150.17	149709	4
<b>2-679-0121</b> Top jamb kit 2951/2953	DBZ	273.58		4
<b>2-679-0130</b> Top jamb kit 2952/2954	ALM	301.66	153861	4
<b>2-679-0131</b> Top jamb kit 2952/2954	DBZ	548.54		4



<b>2-679-0160</b> Glass door kit 2951/2953 *Order 2 ea. for double door	ALM	277.80	168468	8
<b>2-679-0161</b> Glass door kit 2951/2953 *Order 2 ea. for double door	DBZ	401.27		8



<b>2-679-0180</b> Universal Bracket for 2951/2953	ALM	98.29	149710	12
<b>2-679-0181</b> Universal Bracket for 2951/2953	DBZ	144.50		12
<b>2-679-0190</b> Universal Bracket for 2952/2954	ALM	196.45	161684	9
<b>2-679-0191</b> Universal Bracket for 2952/2954	DBZ	289.00	167699	9



## Electrified Products



Description	Finish	2022 List	Stock No.	Case Qty.
<b>2-679-0200</b> Spacer Bracket for 2951/2953	ALM	138.96	153684	12



<b>2-679-0201</b> Spacer Bracket for 2952/2954	ALM	172.58	161686	9
---	-----	--------	--------	---

<b>2-679-0204</b> Armature mounting plate	-	92.62	167666	3
--	---	-------	--------	---

<b>2-679-0205</b> Armature mounting platem w/sensor		154.39	-	3
--	--	--------	---	---

Note: Additional finishes available on many of the 2950 magnetic lock series accessories. Inquire with Hager Customer Service for pricing.



<b>2-679-0210</b> Coordinator mounting bracket for 2951/2953	ALM	185.24	160581	12
---	-----	--------	--------	----

<b>2-679-0220</b> Coordinator mounting bracket for 2952/2954	ALM	339.56	166426	6
---	-----	--------	--------	---



<b>2-679-0281</b> Filler bar - 1/8" x 1-1/4" for 2951/2953	ALM	50.56	149711	12
---	-----	-------	--------	----

<b>2-679-0283</b> Filler bar - 1/8" x 1-1/4" for 2951/2953	DBZ	96.84	149712	12
---	-----	-------	--------	----

<b>2-679-0291</b> Filler bar - 1/4" x 1-1/4" for 2951/2953	ALM	52.01	149713	12
---	-----	-------	--------	----

<b>2-679-0293</b> Filler bar - 1/4" x 1-1/4" for 2951/2953	DBZ	98.29	149715	12
---	-----	-------	--------	----

<b>2-679-0311</b> Filler bar - 1/2" x 1-1/4" for 2951/2953	ALM	57.55	149716	12
---	-----	-------	--------	----

<b>2-679-0313</b> Filler bar - 1/2" x 1-1/4" for 2951/2953	DBZ	103.89	149738	12
---	-----	--------	--------	----

<b>2-679-0321</b> Filler bar - 5/8" x 1-1/4" for 2951/2953	ALM	61.77	149717	12
---	-----	-------	--------	----

<b>2-679-0323</b> Filler bar - 5/8" x 1-1/4" for 2951/2953	DBZ	108.05	149739	12
---	-----	--------	--------	----

<b>2-679-0381</b> Filler bar - 1/8" x 1-1/4" for 2952/2954	ALM	57.55	149718	12
---	-----	-------	--------	----

<b>2-679-0383</b> Filler bar - 1/8" x 1-1/4" for 2952/2954	DBZ	103.89	149740	12
---	-----	--------	--------	----

<b>2-679-0391</b> Filler bar - 1/4" x 1-1/4" for 2952/2954	ALM	61.77	149719	12
---	-----	-------	--------	----

<b>2-679-0393</b> Filler bar - 1/4" x 1-1/4" for 2952/2954	DBZ	108.05	149741	12
---	-----	--------	--------	----

<b>2-679-0411</b> Filler bar - 1/2" x 1-1/4" for 2952/2954	ALM	67.43	149720	12
---	-----	-------	--------	----

<b>2-679-0413</b> Filler bar - 1/2" x 1-1/4" for 2952/2954	DBZ	113.71	149742	12
---	-----	--------	--------	----

<b>2-679-0421</b> Filler bar - 5/8" x 1-1/4" for 2952/2954	ALM	70.20	149721	12
---	-----	-------	--------	----







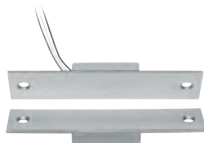
Description	Finish	2022 List	Stock No.	Case Qty.
<b>2-679-0423</b> Filler bar - 5/8" x 1-1/4" for 2952/2954	DBZ	116.48	149743	12
<b>2-679-0491</b> Angle Bracket - 1-1/2" x 1-1/2" for 2951/2953	ALM	67.43	149734	12
<b>2-679-0493</b> Angle Bracket - 1-1/2" x 1-1/2" for 2951/2953	DBZ	113.71	149744	12
<b>2-679-0501</b> Angle Bracket - 2" x 1-1/2" for 2951/2953	ALM	70.20	149735	12
<b>2-679-0503</b> Angle Bracket - 2" x 1-1/2" for 2951/2953	DBZ	116.48	149745	12
<b>2-679-0571</b> Angle Bracket - 1-1/2" x 1-1/2" for 2952/2954	ALM	89.85	149736	12
<b>2-679-0573</b> Angle Bracket - 1-1/2" x 1-1/2" for 2952/2954	DBZ	136.13	149746	12
<b>2-679-0581</b> Angle Bracket - 2" x 1-1/2" for 2952/2954	ALM	95.45	149737	12
<b>2-679-0583</b> Angle Bracket - 2" x 1-1/2" for 2952/2954	DBZ	141.73	149747	12
Note: Additional finishes available on many of the 2950 magnetic lock series accessories. Inquire with Hager Customer Service for pricing				
<b>2961 Magnetic Shear Lock</b> 2,000 lb. holding force 1-5/8" depth, integrated electronics	US32D	1,108.23	151837	6
<b>2965 Magnetic Shear Lock</b> 2,700 lb. holding force 1-5/8" depth, integrated electronics ITC, FTC, HTC Same Price	US32D	1,199.40	151838	6
Options: ITC for standard mounting armature kit for aluminum and hollow metal doors with 7/8" to 1-1/8" deep top channels, wood doors, and factory prepared hollow metal flush edge doors. FTC for mounting for field prepared horizontal mounting in hollow metal doors with flush edge. HTC for mounting 1-15/16" deep Herculite channels. Herculite top rail armature adjustment bracket for leading edge adjustments (HTR) \$429.88 list price adder Magnetic bond sensor (MBS) \$138.70 list price adder Door Position sensor (DPS) \$63.07 list price adder				
<b>2-679-0600</b> Wood Door reinforcement box for 2961	-	61.77	158750	6
<b>2-679-0601</b> Wood Door reinforcement box for 2965		61.77		6
<b>2958 Delayed Egress Magnetic Lock</b> 1,650 lb. holding force Surface mount - single 12/24 VDC	ALM DBZ	1,697.45 1,935.09	149748 176098	6
<b>2958 T Tandem Delayed Egress Magnetic Lock</b> 1,650 lb. holding force Surface mount - double 12/24 VDC	ALM DBZ	2,854.72 3,254.39	159818	6



# Electrified Products

Description	Finish	2022 List	Stock No.	Case Qty.
<p>Operation (Must Specify):            NA - IBC, IFC, NFPA101, NFPA1-UFC, UBC, SBC Compliant            ND - IBC, IFC, California Building Code OSHPD, NFPA 101, NFPA1-UFC, UBC, SBC Compliant            BD - BOCA National Building Code            CH - City of Chicago Building Code</p> <p>Reset Control:            Built in key switch - 1-30 second timed bypass, sustained bypass and alarm reset (std)            (Not available with BOCA and Chicago operation)            Built in reset push switch. Available with NFPA (NA) only            Less key or push switch (No price reduction)</p> <p>Options:            Door Position Status (DPS) \$59.54 list price adder            Magnetic Bond Sensor (MBS) \$97.44 list price adder            Anti-Tamper Switch (ATS) \$81.83 list price adder</p>				
<p><b>2972 Exit Switch</b>            MSD            2" Square button            Momentary, SPDT            10 AMP contact</p>	US32D	102.72	149630	12
<p><b>2972T Exit Switch with Integrated Adjustable Timer</b>            2" Square Button            Adjustable 1-60 second timer            Note: Not Code Compliant</p>	US32D	198.07	151710	6
<p>Options: Red LED \$29.77 list price adder            Green LED \$29.77 list price adder            2 LED's \$37.17 list price adder</p>				
<p><b>2973 Code Compliant Exit Switch</b>            2" Square Button            Integrated fixed 30- second timer            CSFM Listed, NFPA, IBC, IFC code compliance            for Access Controlled Egress Doors            LED illumination</p>	US32D	205.37	149631	6
<p>Options: Red LED \$29.77 list price adder            Green LED \$29.77 list price adder            2 LED's \$37.17 list price adder</p>				
<p><b>2977 Exit Switch</b>            Piezoelectric Button            Green &amp; Red Illumination            Adj. 1-35 sec. 12/24VDC Timer</p>	US32D	196.45	149634	12
<p><b>2978 Touchless Exit Switch</b>            Infrared sensor            Illuminated status indication</p>	US32D	115.79	149636	12
<p><b>4801 Pressure Sense Bar</b>            Pressure sense technology; Tri-failsafe            12/24 VDC voltage sense input            includes 10 ft. cable and connector;            armored power transfer loop            36" Standard, Optional 42" &amp; 48" available</p>	ALM BLK	509.25 509.25	156360 167722	6





Description	Finish	2022 List	Stock No.	Case Qty.
<b>2-679-0611 PIR Egress Sensor</b>	White	336.73	149632	12
<b>2-679-0612 PIR Egress Sensor</b>	Black	336.73	62176	12
<b>2-679-0708</b> Under Desk Push Switch	White	144.82	176289	1
<b>2-679-0620</b> Concealed Mortise Power Transfer Loop	-	92.62	149750	12
<b>2-679-0621</b> Heavy Duty Power Transfer 2-Wire	ALM	554.15	152079	6
<b>2-679-0622</b> Heavy Duty Power Transfer 2-Wire	DBZ	554.15	160604	6
<b>2-679-0623</b> Heavy Duty Power Transfer 10-Wire	ALM	554.15	149751	6
<b>2-679-0624</b> Heavy Duty Power Transfer 10-Wire	DBZ	554.15	154018	6
<b>2-679-0625</b> Concealed Magnetic Contact	ALM	153.25	152890	12
<b>2-679-0626</b> Magnetic Switch	-	90.38	182672	1
<b>2-679-0640</b> Single gang back box	-	18.64	149752	1
<b>2-679-0641</b> 3-gang interior mount box	-	138.96	166911	1
<b>2-679-0642</b> Shroud for surface mount box outdoor use	-	88.21	166912	1
<b>2-679-0650</b> Emergency Door Release Blue break glass station	-	257.69	149754	6
<b>2-659-0368</b> Restroom Kit Includes relay, DPS, push to lock and indicator	-	635.36	34130	6
<b>2-659-0372</b> Emergency Kit Includes light, button and sign	-	250.14	149754	6



## 8400 Series - Low Energy Power Operator



Description	Mount	Finish	2022 List	Stock No.	Box Qty.
<b>8418 Single Operator</b>	Push	ALM	5,512.05	162136	1
1 unit, 1 controller, single cover, handed		DBZ	5,512.05	162141	
Standard Sizes - 36"	Pull	ALM	5,549.27	162138	
42", 44" and 48" - add \$294.56 to list price		DBZ	5,549.27	162143	
Specify Push or Pull side of door					
<b>8419 Simultaneous Pair</b>	Push	ALM	9,892.94	162145	1
2 units, 1 controller, double cover, non-handed		DBZ	9,898.94	162147	
Standard Sizes - 60" and 72"	Pull	ALM	10,014.86	162146	
84", 88", 92" and 96" - add \$294.56 to list price		DBZ	10,014.86	162148	
Specify Push or Pull side of door					
<b>8420 Independent Pair</b>	Push	ALM	10,812.25	162149	1
2 units, 2 controllers, double cover, non-handed		DBZ	10,812.25	162151	
Standard Sizes - 60" and 72"	Pull	ALM	10,938.03	162150	
84", 88", 92" and 96" - add \$294.56 to list price		DBZ	10,938.03	162152	
Specify Push or Pull side of door					
<b>8421 Double Egress Simultaneous Pair</b>	Push/Pull	ALM	10,508.92	162153	1
2 units, 1 controller, double cover, non-handed		DBZ	10,508.92	162154	
Standard Sizes - 60" and 72"					
84", 88", 92" and 96" - add \$294.56 to list price					
<b>8422 Double Egress Independent Pair</b>	Push/Pull	ALM	11,484.97	162155	1
2 units, 2 controllers, double cover, non-handed		DBZ	11,484.97	162156	
Standard Sizes - 60" and 72"					
84", 88", 92" and 96" - add \$294.56 to list price					
<b>8423 Single Operator with Mechanical Closer</b>	Push	ALM	7,446.95		1
1 unit, 1 controller, 1-5100 Series Door Closer,		DBZ	7,446.95		
double cover, handed	Pull	ALM	7,446.95		
Standard Sizes - 60" and 72"		DBZ	7,446.95		
84", 88", 92" and 96" - add \$294.56 to list price					
Specify Push or Pull side of door					
*Note: Non-standard door widths in quantities under 50 units: please contact Technical Support for list adder.					
*Note: Curtain wall operators are available. Please contact Technical Support					

## 8400 Series - Low Energy Power Operator



Description	Finish	2022 List	Stock No.	Case Qty.	Box Qty.
<b>2-659-0151</b> Pull Side Track Arm with 20mm Spindle	ALM	532.87	162512	-	1
<b>2-659-0152</b> Pull Side Track Arm with 20mm Spindle	DBZ	648.45	162513	-	
<b>2-659-0153</b> Push Side Standard Arm with 35mm Spindle	ALM	532.87	162515	-	1
<b>2-659-0154</b> Push Side Standard Arm with 35mm Spindle	DBZ	648.45	162516	-	
<b>2-659-0220</b> Push Side Standard Arm with 50mm Spindle For use with double egress assemblies	ALM	532.87	162561	-	1
<b>2-659-0221</b> Push Side Standard Arm with 50mm Spindle For use with double egress assemblies	DBZ	648.45	162562	-	
<b>2-659-0222</b> Double Egress Arm Assembly Track arm with 20mm Spindle	ALM	963.00	162563	-	1
<b>2-659-0223</b> Double Egress Arm Assembly Track arm with 20mm Spindle	DBZ	1,091.39	162564	-	
<b>2-659-0224</b> 20mm Replacement Spindle For use with double egress and track arm assembly	ALM	184.31	162565	-	1
<b>2-659-0225</b> 20mm Replacement Spindle For use with double egress and track arm assembly	DBZ	224.74	162566	-	
<b>2-659-0226</b> 35mm Replacement Spindle For use with standard single and standard pair applications	ALM	184.31	162567	-	1
<b>2-659-0227</b> 35mm Replacement Spindle For use with standard single and standard pair applications	DBZ	224.74	162568	-	
<b>2-659-0228</b> 50mm Replacement Spindle	ALM	184.31	162570	-	1
<b>2-659-0229</b> 50mm Replacement Spindle For use with push side standard arm - double egress only	DBZ	224.74	162573	-	
<b>2-659-0230</b> Narrow Top Rail Drop Plate	ALM	163.12	162693	-	1
<b>2-659-0231</b> Narrow Top Rail Drop Plate	DBZ	163.12	162694	-	
<b>2-659-0232</b> Cover for Single Operator - 36"	ALM	308.20	162574	-	1
<b>2-659-0233</b> Cover for Single Operator - 36"	DBZ	308.20	162661	-	



## 8400 Series - Low Energy Power Operator



Description	Finish	2022 List	Stock No.	Case Qty.	Box Qty.
<b>2-659-0234</b> Cover for Dual Operators - 72"	ALM	539.29	162663	-	1
<b>2-659-0235</b> Cover for Dual Operators - 72"	DBZ	539.29	162692	-	-
Note: Additional sizes available. Inquire with Hager customer service for pricing.					
<b>2-659-0236</b> Power Supply On-Board 115 VAC 60Hz 24 VDC 500mA		1,007.93	162696	-	1
<b>2-659-0237</b> Relay Board 24VDC 40mA 5 amp/ 220 VAC or 28VDC DPDT contacts		39.24	162697	-	1



## 8300 Series - Low Energy Power Operator



Description	Mount	Finish	2022 List	Stock No.	Box Qty.
<b>8318 Single Operator</b> 1 unit, single cover, non-handed Standard Sizes - 36" 42", 44" and 48" Specify Push or Pull side of door	Push	ALM	3,858.40	75963	1
		DBZ	4,303.60	75960	1
		BLK	4,303.60		
	Pull	ALM	3,858.40	75956	1
		DBZ	4,303.60	75937	1
		BLK	4,303.60		
<b>8319 Simultaneous Pair</b> 2 units, double cover, non-handed Standard Sizes - 72" 84", 88", and 96" Specify Push or Pull side of door	Push	ALM	7,716.80	75652	1
		DBZ	9,105.82	75653	1
		BLK	9,105.82		
	Pull	ALM	7,716.80	75650	1
		DBZ	9,105.82	75644	1
		BLK	9,105.82		
<b>8321 Double Egress Simultaneous Pair</b> 2 units, double cover, non-handed Standard Sizes - 72" 84", 88", 96"	Push/Pull	ALM	8,553.78	75584	1

For non-standard sizes, add \$278.78 to single operator list price. For doubles, add \$416.18 to the list price.



## 8300 Series - Low Energy Power Operator

Description	Finish	2022 List	Stock No.	Case Qty.	Box Qty.
<b>2-679-0901</b> 8300 - 20mm Replacement Spindle		120.47	75504	-	1
<b>2-679-0902</b> 8300 - 35mm Replacement Spindle		120.47	75500	-	1
<b>2-679-0903</b> 8300 - 50mm Replacement Spindle		120.47	75501	-	1
<b>2-679-0904</b> 8300 - 80mm Replacement Spindle		144.58	75502	-	1
<b>2-679-0896</b> 8300 - Standard Arm w/ 35mm Spindle (Push)	ALM	361.35	75498	-	1
<b>2-679-0897</b> 8300 - Standard Arm w/ 35mm Spindle (Push)	BLK	361.35	75494	-	1
<b>2-679-0898</b> 8300 - Track Arm w/ 20mm Spindle (Pull)	ALM	457.81	75495	-	1
<b>2-679-0899</b> 8300 - Track Arm w/ 20mm Spindle (Pull)	BLK	457.81	75485	-	1
<b>2-679-0900</b> 8300 - Dbl Egress Arm w/ 20mm Spindle (Pull)	ALM	144.58	75482	-	1
<b>2-679-0905</b> 8300 - Standard Arm Extension	ALM	240.89	75478	-	1
<b>2-679-0906</b> 8300 - Standard Arm Extension	BLK	936.70	75472	-	1
<b>2-679-0907</b> 8300 - KP EVO Programming Device		1,252.81	75470	-	1



## Electrified Products - Low Energy Power Operator Controls



Description	Finish	2022 List	Stock No.	Case Qty.	Box Qty.
<b>2-659-0303</b> 6" Round with Text & Logo	US32D/Blue	242.93	185055	12	1
<b>2-659-0304</b> 6" Round with Logo Only	US32D/Blue	242.93	185058	12	1
<b>2-659-0306</b> 4-3/4" Square with Logo Only	US32D/Blue	242.93	185059	12	1
<b>2-659-0307</b> 4-3/4" Square with Logo Only	US32D/Blue	242.93	186793	12	1
<b>2-659-0308</b> 4-3/4" Square with Text Only	US32D/Blue	242.93	186794	12	1
<b>2-659-0161</b> 6" Round Actuator Push To Open and Handicap Symbol	US32D/Blue	145.79	162698	20	1
<b>2-659-0162</b> 6" Round Actuator Handicap Symbol	US32D/Blue	145.79	162699	20	1
<b>2-659-0357</b> 4.5" Square Actuator Push to Open text and Accessibility Logo	US32D/Blue	115.05	068110	20	1
<b>2-659-0358</b> 6" Round Actuator Push to Open text and Accessibility Logo	US32D/Blue	115.05	068104	20	1
<b>2-659-0163</b> Surface Mount Box For 6" Round Actuator	Black	48.06	162700	20	1



## Electrified Products - Low Energy Power Operator Controls



**2-659-0164**  
Weather Ring  
For 6" Round Actuator

Black 9.73 162701 10 1



**2-659-0162**  
6" Round Actuator  
Handicap Symbol

US32D/Blue 134.99 162699 20 1



**2-659-0165**  
4.5" Round Actuator  
Push To Open and Handicap Symbol

US32D/Blue 126.39 162703 20 1



**2-659-0166**  
4.5" Round Actuator  
Handicap Symbol

US32D/Blue 126.39 162704 20 1



**2-659-0167**  
Surface Mount Box  
For 4.5" Round Actuator

Black 38.92 162705 20 1



**2-659-0168**  
Weather Ring  
For 4.5" Round Actuator

Black 9.73 162706 10 1



**2-659-0241**  
Universal Back Plate  
For use when mounting 4.5" round or 4.5" square actuator to bollard post

US32D 31.65 162743 10 1



**2-659-0169**  
6" Square Actuator  
Push To Open and Handicap Symbol

US32D/Blue 145.79 162707 20 1



**2-659-0170**  
6" Square Actuator  
Handicap Symbol

US32D/Blue 145.79 162708 20 1



**2-659-0171**  
Surface Mount Box  
For 6" Square Actuator

Black 38.92 162709 20 1



**2-659-0172**  
4.5" Square Actuator  
Push To Open and Handicap Symbol

US32D/Blue 119.06 162710 20 1

## Electrified Products - Low Energy Power Operator Controls



Description	Finish	2022 List	Stock No.	Case Qty.	Box Qty.
<b>2-659-0173</b> 4.5" Square Actuator Handicap Symbol	US32D/Blue	119.06	162711	20	1
<b>2-659-0174</b> Surface Mount Box For 4.5" Square Actuator	Black	38.92	162712	45	1
<b>2-659-0175</b> 1.5" x 4.75" Jamb Actuator Push To Open and Handicap Symbol	US32D/Blue	115.40	162713	20	1
<b>2-659-0176</b> 1.5" x 4.75" Jamb Actuator Handicap Symbol	US32D/Blue	115.40	162714	20	1
<b>2-659-0177</b> Surface Mount Box For 1.5" x 4.75" Jamb Actuator	Black	24.33	162715	20	1
<b>2-659-0178</b> 36" Low Profile Actuator Push To Open and Handicap Symbol  Wireless Includes 433 MHz wireless transmitter Exceeds California Building Code, Section 1117B.6	US32D/Blue	850.19	162716	2	1
<b>2-659-0179</b> 36" Low Profile Actuator Push To Open and Handicap Symbol  Hard Wired Exceeds California Building Code, Section 1117B.6	US32D/Blue	783.39	162717	2	1
<b>2-659-0242</b> 4.75" Vestibule Actuator Push To Open and Handicap Symbol	US32D/Blue	291.52	162741	20	1
<b>2-659-0243</b> Surface Mount Box For 4.75" Vestibule Actuator	Black	91.13	162742	42	1
<b>2-659-0180</b> Bollard Post For use with 4.5" round and 4.5" square push plates	Black	607.26	162720	1	1



## Electrified Products - Low Energy Power Operator Controls



Description	Finish	2022 List	Stock No.	Case Qty.	Box Qty.
<b>2-659-0181</b> Bollard Post For use with 4.5" round and 4.5" square push plates	Bronze	607.26	162724	1	1
<b>2-659-0182</b> Bollard Post For use with 4.5" round and 4.5" square push plates	Silver	607.26	162725	1	1
<b>2-659-0183</b> 433 MHz Receiver Digital, Radio Controlled	-	139.72	162726	20	1
<b>2-659-0184</b> 3-Volt Transmitter Wireless Hardwired to actuator	Black	133.60	162727	20	1
<b>2-659-0185</b> 9-Volt Transmitter Wireless	Black	133.60	162728	20	1
<b>2-659-0186</b> Wireless Transmitter One Button	Black	133.60	162729	20	1
<b>2-659-0240</b> Programmable Relay and Door Sequencer For door timing and advanced relay sequencing	-	205.43	082867	20	1
*Note: Actuators come standard hard-wired. Must order receiver and transmitter separately for wireless applications.					
<b>2-659-0332</b> Bodyguard Sensor Overhead Presence Sensor	Black	619.39	94685	24	1
<b>2-659-0333</b> Bodyguard Programming Remote		70.00	94645	1	1
<b>2-659-0334</b> Bodyguard Mounting Kit	Black	64.11	94641	20	1
<b>2-659-0335</b> Superscan I Safety Sensor Single Mount Unit	Black	448.53	94626	6	1
<b>2-659-0336</b> Superscan II Safety Sensor Single Mount Unit with Master and Slave Modules	Black	768.90	94623	6	1

