

SAFE LOCK


by **Kwikset**



Price Guide

TABLE OF CONTENTS

Warranty	1
Pricing	2-3
Service Parts	4
Specifications	5-7
Options	8
Backset	8
Keying Charges	8
Ordering Information	9
Weights & Measurements	10
General Information	11

Regina™ Knob	Model	Function	Case						
			11P	15	26	26D	514	PKG	QTY
	SK1000RG	Hall/Closet	\$19.70	\$18.10		\$16.10	\$19.70	BP	30
	SK3000RG	Bed/Bath	\$21.10	\$19.20		\$17.40	\$21.10	BP	30
	SK5000RG	Entry	\$25.00	\$22.90		\$20.80	\$25.00	BP	30
	SK7000RG	Dummy	\$8.80	\$8.00		\$7.20	\$8.80	BP	20
	SK1002RG	UL Hall/Closet	\$24.90	\$22.60		\$20.60	\$24.90	BP	30
	SK5002RG	UL Entry	\$32.40	\$29.40		\$27.70	\$32.40	BP	30


Athens™ Knob	Model	Function	Case						
			11P	15	26	26D	514	PKG	QTY
	SK1000AS	Hall/Closet		\$19.20				BP	30
	SK3000AS	Bed/Bath		\$19.70				BP	30
	SK5000AS	Entry		\$24.30				BP	30
	SK7000AS	Dummy		\$8.80				BP	20
	SK1002AS	UL Hall/Closet		\$23.70				BP	30
	SK5002AS	UL Entry		\$31.10				BP	30

Winston™ Lever	Model	Function	Case						
			11P	15	26	26D	514	PKG	QTY
	SL1000WI	Hall/Closet	\$27.70	\$25.10		\$23.50	\$29.90	BP	20
	SL3000WI	Bed/Bath	\$29.10	\$26.60		\$24.20	\$35.20	BP	20
	SL4000WI*	Bed/Bath		\$28.70		\$34.60	\$35.20	BP	20
	SL5000WI	Entry	\$33.80	\$29.80		\$26.90	\$39.40	BP	20
	SL6000WI*	Entry		\$32.20		\$37.30	\$39.40	BP	20
	SL7000WI	Dummy	\$14.20	\$13.00		\$11.40	\$16.50	BP	20
	SL1002WI	UL Hall/Closet	\$32.70	\$29.60		\$28.00	\$34.90	BP	20
	SL5002WI	UL Entry	\$40.10	\$36.60		\$33.60	\$45.70	BP	20

Winston™ Lever - Square	Model	Function	Case						
			11P	15	26	26D	514	PKG	QTY
	SL1000WI SQT	Hall/Closet		\$27.40	\$27.40		\$29.90	BP	12
	SL4000WI SQT	Bed/Bath		\$28.70	\$33.10		\$35.20	BP	12
	SL6000WI SQT	Entry		\$32.20	\$37.30		\$39.40	BP	12
	SL7000WI SQT	Dummy		\$15.10	\$15.10		\$16.50	BP	20
	SL1002WI SQT	UL Hall/Closet		\$31.70	\$31.70		\$34.90	BP	12
	SL6002WI SQT	UL Entry		\$38.60	\$43.60		\$45.70	BP	12

Grapevine™ Lever	Model	Function	Case						
			11P	15	26	26D	514	PKG	QTY
	SL1000GV	Hall/Closet	\$29.80	\$27.10			\$29.80	BP	20
	SL3000GV	Bed/Bath	\$31.20	\$28.40			\$31.20	BP	20
	SL5000GV	Entry	\$35.20	\$32.10			\$35.20	BP	20
	SL7000GV	Dummy	\$15.50	\$14.10			\$15.50	BP	20
	SL1002GV	UL Hall/Closet	\$34.80	\$31.60			\$34.80	BP	20
	SL5002GV	UL Entry	\$42.60	\$38.90			\$42.60	BP	20

*push button

Layton™ Lever	Model	Function	Case						
			11P	15	26	26D	514	PKG	QTY
	SL1000LY	Hall/Closet	\$31.40	\$28.80		\$26.80	\$31.40	BP	20
	SL3000LY	Bed/Bath	\$33.00	\$30.10		\$28.00	\$33.00	BP	20
	SL5000LY	Entry	\$37.10	\$33.80		\$32.00	\$37.10	BP	20
	SL7000LY	Dummy	\$17.30	\$15.90		\$14.90	\$17.30	BP	20
	SL1002LY	UL Hall/Closet	\$36.60	\$33.30		\$31.40	\$36.60	BP	20
	SL50002LY	UL Entry	\$44.40	\$40.50		\$38.60	\$44.40	BP	20

Daylon™ Lever - Square

Daylon™ Lever - Square	Model	Function	Case						
			11P	15	26	26D	514	PKG	QTY
	SL1000DAL SQT	Hall/Closet	\$31.40	\$28.80	\$28.80	\$28.80	\$31.40	BP	12
	SL4000DAL SQT	Bed/Bath	\$37.00	\$34.80	\$34.80	\$34.80	\$37.00	BP	12
	SL6000DAL SQT	Entry	\$41.40	\$39.20	\$39.20	\$39.20	\$41.40	BP	12
	SL7000DAL SQT	Dummy	\$17.30	\$15.90	\$15.90	\$15.90	\$17.30	BP	20
	SL10002DAL SQT	UL Hall/Closet	\$36.60	\$33.30	\$33.30	\$33.30	\$36.60	BP	12
	SL6002DAL SQT	UL Entry	\$48.00	\$45.80	\$45.80	\$45.80	\$48.00	BP	12


Daylon™ Lever - Round

Daylon™ Lever - Round	Model	Function	Case						
			11P	15	26	26D	514	PKG	QTY
	SL1000DAL RDT	Hall/Closet	\$31.40	\$28.80	\$28.80	\$28.80	\$31.40	BP	12
	SL4000DAL RDT	Bed/Bath	\$37.00	\$34.80	\$34.80	\$34.80	\$37.00	BP	12
	SL6000DAL RDT	Entry	\$41.40	\$39.20	\$39.20	\$39.20	\$41.40	BP	12
	SL7000DAL RDT	Dummy	\$17.30	\$15.90	\$15.90	\$15.90	\$17.30	BP	20
	SL10002DAL RDT	UL Hall/Closet	\$36.60	\$33.30	\$33.30	\$33.30	\$36.60	BP	12
	SL6002DAL RDT	UL Entry	\$48.00	\$45.80	\$45.80	\$45.80	\$48.00	BP	12

Reminy Lever - Round

Reminy Lever - Round	Model	Function	Case						
			11P	15	26	26D	514	PKG	QTY
	SL1000REL RDT	Hall/Closet		\$28.80	\$28.80		\$31.40	BP	12
	SL4000REL RDT	Bed/Bath		\$34.80	\$34.80		\$37.00	BP	12
	SL6000REL RDT	Entry		\$39.20	\$39.20		\$41.40	BP	12
	SL7000REL RDT	Dummy		\$15.90	\$15.90		\$17.30	BP	20
	SL10002REL RDT	UL Hall/Closet		\$33.30	\$33.30		\$36.60	BP	12
	SL6002REL RDT	UL Entry		\$45.80	\$45.80		\$48.00	BP	12

Deadbolts

Deadbolts	Model	Function	Case						
			11P	15	26	26D	514	PKG	QTY
	SD9100	Single Cylinder	\$25.50	\$23.30		\$21.00	\$25.50	BP	12
	SD9200	Double Cylinder	\$28.50	\$25.90		\$23.90		BP	12
	SD9300	One-Sided	\$15.00	\$13.70		\$12.60	\$15.00	BP	12
	SD9102	UL Single Cylinder	\$32.90	\$29.90		\$27.80	\$32.90	BP	12

Part Number	Style	Model	Description	List Price
810000-384	RCAL Deadbolt Latch	60212	60212 DB RCAL 11P S/LCK	\$5.80
810000-382	RCAL Deadbolt Latch	60212	60212 DB RCAL 15 S/LCK	\$5.80
810000-385	RCAL Deadbolt Latch	60212	60212 DB RCAL 26D S/LCK	\$5.80
810000-394	RFAL Deadbolt Latch	60214	60214 DB RFAL 26D S/LCK	\$5.80
810000-389	SCAL Deadbolt Latch	60213	60213 DB SCAL 11P S/LCK	\$5.80
810000-387	SCAL Deadbolt Latch	60213	60213 DB SCAL 15 S/LCK	\$5.80
810000-390	SCAL Deadbolt Latch	60213	60213 DB SCAL 26D S/LCK	\$5.80
810000-403	Screwpack, Knob	60175	60175 LPP SK1000 11P	\$0.60
810000-400	Screwpack, Lever	60088	60088 LPP SL1000 11P	\$0.60
810000-397	Screwpack, Dummy Lever	60085	60085 LPP SL7000 11P	\$0.30
810000-406	Screwpack, Dummy Knob	60176	60176 LPP SK7000 11P	\$0.30
810000-412	Screwpack, Single Cylinder Deadbolt	60217	60217 LPP SD9100 11P	\$0.60
810000-415	Screwpack, Double Cylinder Deadbolt	60218	60218 LPP SD9200 11P	\$0.80
810000-418	Screwpack, Single Sided Deadbolt	60219	60219 LPP SD9300 11P	\$1.40
810000-189	RFAL Plainlatch	60092	60092 PL RFAL 26D	\$4.40
810000-183	RCAL Plainlatch	60090	60090 PL RCAL 26D	\$4.40
810000-182	RCAL Plainlatch	60090	60090 PL RCAL 15	\$4.40
810000-181	RCAL Plainlatch	60090	60090 PL RCAL 11P	\$4.40
810000-185	SCAL Plainlatch	60091	60091 PL SCAL 11P S/LCK	\$4.40
810000-186	SCAL Plainlatch	60091	60091 PL SCAL 15 S/LCK	\$4.40
810000-187	SCAL Plainlatch	60091	60091 PL SCAL 26D S/LCK	\$4.40
810000-173	RCAL Deadlatch	60121	60121 DL RCAL 15	\$5.00
810000-174	RCAL Deadlatch	60121	60121 DL RCAL 26D	\$5.00
810000-172	RCAL Deadlatch	60121	60121 DL RCAL 11P	\$5.00
810000-180	RFAL Deadlatch	60123	60123 DL RFAL 26D S/LCK	\$5.00
810000-176	SCAL Deadlatch	60122	60122 DL SCAL 11P S/LCK	\$5.00
810000-177	SCAL Deadlatch	60122	60122 DL SCAL 15 S/LCK	\$5.00
810000-178	SCAL Deadlatch	60122	60122 DL SCAL 26D S/LCK	\$5.00
810000-171	Key Blank	60103	60103 KEY BLNK KW S/LCK	\$1.30
84258-001	RCAL Plainlatch UL	60093	60093 SL1000 RCL UL 15 S/LCK 5CT	\$20.20
84258-002	RCAL Plainlatch UL	60093	60093 SL1000 RCL UL 690 S/LCK 5CT	\$20.20
84259-001	SCAL Plainlatch UL	60094	60094 SL1000 SCL UL 15 S/LCK 5CT	\$20.20
84259-002	SCAL Plainlatch UL	60094	60094 SL1000 SCL UL 690 S/LCK 5CT	\$20.20

Keying Charges	List Price
MK	\$1.80
PK	\$2.45
GMK	\$6.85
PMK	\$4.20
MAIS	\$5.05

Knobs

Door Prep	Cross Bore 2-1/8", Edge Bore 1" Latch Face 1" x 2-1/4"	Strikes	2-1/4" full lip Specify round corner or square corner
Backset	Adjustable 2-3/8" or 2-3/4"	Bolt	1/2" Throw
Door Thickness	1-3/8" - 1-3/4" doors standard No thick door option	Door Handing	Non-handed
Cylinder	KW 5 pin	ANSI/BHMA	A156.2 Grade 3
Faceplates	1" x 2-1/4" Specify round corner, square corner or drive-in	ADA	N/A
		UL	Meets UL 3 hour fire rating for all UL functions. ULRef #R7860

Levers

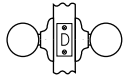
Door Prep	Cross Bore 2-1/8", Edge Bore 1" Latch Face 1" x 2-1/4"	Strikes	2-1/4" full lip Specify round corner or square corner
Backset	Adjustable 2-3/8" or 2-3/4" UL 2-3/4" standard 2-3/8" option	Bolt	1/2" Throw
Door Thickness	1-3/8" - 1-3/4" doors standard. No thick door option	ANSI/BHMA	A156.2 Grade 3
Cylinder	KW 5 pin	ADA	1000 and 7000 functions satisfy section 4.13.9 ADA requirements
Faceplates	1" x 2-1/4" Specify round corner, square corner or drive-in	UL	Meets UL 3 hour fire rating for all UL functions. ULRef #R7860

Deadbolts

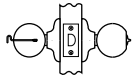
Door Prep	Single & Double Cylinder: Cross Bore 2-1/8", Edge Bore 1" Latch Face 1" x 2-1/4" One Sided Deadbolt: Half Cross Bore 1-5/8", Edge Bore 1" Latch Face 1" x 2-1/4"	Strikes	1" x 2-1/4" Specify round corner or square corner
Backset	Adjustable 2-3/8" or 2-3/4"	Bolt	1" Throw
Door Thickness	1-3/8" - 1-3/4" doors standard. No thick door option	Door Handing	Non-handed
Cylinder	KW 5 pin	ANSI/BHMA	A156.2 Grade 3
Faceplates	1" x 2-1/4" Specify round corner, square corner or drive-in	ADA	Interior turn piece meets 4.13.9 ADA requirements
		UL	Meets UL 3 hour fire rating for all UL functions. ULRef #10923

Regina & Athens Knobs

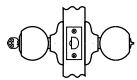
Functions



Passage/Hall/Closet: Both knobs & levers always free.
1000/1002UL - F75



Privacy/Bed/Bath: Both knobs locked or unlocked by turnbutton inside. Outside knob unlocked by emergency key.
3000 - F76



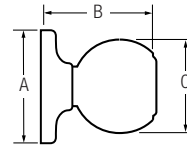
Entry: Both knobs locked or unlocked by key outside or turnbutton inside.
5000/5002UL - F82



Half Dummy Trim, Surface Mounted: For doors where only a pull is required. No operation.
7000 - Int.

Note: Description (ANSI/BHMA functions are listed in italics)

Dimensions



Design	A	B	C
Athens™	2-9/16"	2-3/8"	2"
Regina™	2-9/16"	2-7/8"	1-3/4"

Winston, Grapevine, Daylon, Layton, & Reminy Levers

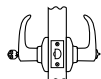
Functions



Passage/Hall/Closet: Both levers always free.
1000/1002UL - F75



Privacy/Bed/Bath: Both levers locked or unlocked by turnbutton or push button inside. Outside lever unlocked by emergency key.
3000/4000 - F76



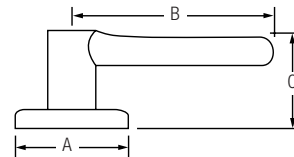
Keyed Entry Lever: Both sides locked or unlocked by key outside or turnbutton or push button inside.
5000/5002UL/6000 - F82



Half Dummy Trim, Surface Mounted: For doors where only a pull is required. No operation.
7000 - Int.

Note: Description (ANSI/BHMA functions are listed in italics)

Dimensions



Design	A	B	C	C (keyed)
Winston™	2-9/16"	3-5/8"	2-3/8"	2-3/8"
Grapevine™	2-9/16"	3-3/4"	2-1/2"	2-1/2"
Layton™	2-9/16"	3-5/8"	2-3/8"	2-3/8"
Daylon™	2-9/16"	3-5/8"	2-3/8"	2-3/8"
Reminy™	2-9/16"	3-5/16"	37/64"	4-7/32"

Deadbolts

Functions



Single Cylinder: Deadbolt operated by key outside and thumbturn inside.
9100/9102UL - *E0153*



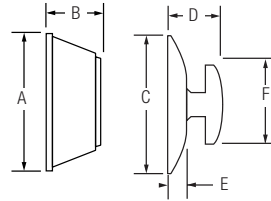
Double Cylinder: Deadbolt operated by key both sides.
9200 - *E0143*



One Sided: Deadbolt operated by thumbturn one side. No trim on other side. Half bore door prep..
9300 - *E0193*

Note: Description (ANSI/BHMA functions are listed in italics)

Dimensions



Design	A	B	C	D	E	F
Single Cylinder	2-1/2"	1-1/8"	2-9/16"	3/4"	1/4"	2-1/8"
Double Cylinder	2-1/2"	1-1/8"	2-9/16"	1"		
One Sided			2-9/16"	3/4"	1/4"	2-1/8"

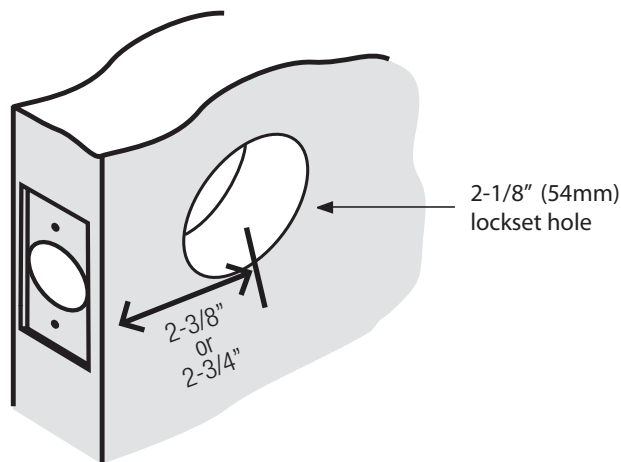
Keying Charges

Kwikset	List Price
KD-Keyed Differently	No charge
K2-K6-Keyed Alike	No charge
WITH-Keyed with other item	No charge
KMISC- K6	No charge
MK-Master Keyed	\$1.80
PK-Builder Keyed	\$2.45
GMK-Grand Master Keyed	\$6.85
PMK-Builder Master Keyed	\$4.20
MAIS- Maison Keyed	\$5.05

All locks are shipped KD unless otherwise specified.

Backset

Backset is the distance from center edge of door to center of the 2-1/8" (54mm) diameter hole, 2-3/8" or 2-3/4" in most cases.



Order Sequence: Function + Style + Finish + Keyway + Keying + Latch + Strike. See examples below

Step 1: US Function

Model #	Non UL Products
SK1000	Knob Passage
SK3000	Knob Privacy
SK7000	Knob Dummy
SK5000	Knob Entry
SL1000	Lever Passage
SL3000	Lever Privacy
SL4000	Lever Passage
SL7000	Lever Dummy
SL5000	Lever Entry
SL6000	Entry
SD9100	Deadbolt Single
SD9200	Deadbolt Double
SD9300	Deadbolt One Sided
Model #	UL Products
SK1002	Knob Passage
SK5002	Knob Entry
SL1002	Lever Passage
SL5002	Lever Entry
SD9102	Deadbolt Single

Step 2: Style

Style Symbol	Style Name
Knobs	
RG	Regina
AS	Athens
Lever	
WI	Winston
GV	Grapevine
LY	Layton
DAL	Daylon
REL	Reminy
Deadbolt	
SD	

Step 3: Finishes

Finish #	Finish Name
11P	Venetian Bronze
15	Satin Nickel
26	Polished Chrome
26D	Satin Chrome
514	Matte Black

Step 4: Keying

Kwikset	
Key Code	Description
KD	Keyed Different
K2,K3,K4,K5,K6	Keyed Alike
MK	Master Keyed
PK	Builder Key
GMK	Grand Master Key
PMK	Builder Master Keyed
MAIS	Maison Keyed
WITH	Tie-up
KMISC	More than 6 cylinders keyed alike

Step 5: Latch

Latch Code	Latch Style
RCAL	Round Corner Adjustable Latch
RFAL	Round Face Adjustable Latch
SCAL	Square Corner Adjustable Latch

Step 6: Strike

Strike Code	Strike Style
RCS	Round Corner Strike
5303	Full-Lip (Deadbolt/Handlesets Only)
SCS	Square Corner Strike

Example 1: Kwikset keyway; master keyed

Order Entry: 4 SL 5000 15 KW MK RCAL RCS
 (MK key cut = 56787) **Order Description:** 4 Safe Lock Grapevine levers, satin nickel, entry function with Kwikset keyway, master keyed and cut 56787, round corner adjustable latch and round corner strike

Example 2: UL product order

Order Entry: 4 SL5002 WI 26D KW KD RCAL RCS
Order Description: 4 Safe Lock UL Winston levers in satin chrome, entry function, keyed different, round corner adjustable latch with round corner strike

Box Pack		Unit				Master Case				
Knobs	Quantity	Length (in.)	Width (in.)	Height (In.)	Wt.(lbs.)	Quantity	Length	Width (in.)	Height (In.)	Wt.(lbs.)
Entry	1	7.25	3.19	3.13	0.96	30	15.25	10.50	16.50	33.40
Privacy	1	7.25	3.19	3.13	0.96	30	15.25	10.50	16.50	33.40
Passage	1	7.25	3.19	3.13	0.96	30	15.25	10.50	16.50	33.40
Dummy	1	2.75	2.75	3.19	0.28	20	14.25	6.38	7.25	6.00

Levers	Quantity	Length (in.)	Width (in.)	Height (In.)	Wt.(lbs.)	Quantity	Length	Width (in.)	Height (In.)	Wt.(lbs.)
Entry	1	6.88	5.06	3.13	1.42	20	14.50	11.00	16.50	32.00
Privacy	1	6.88	5.06	3.13	1.42	20	14.50	11.00	16.50	32.00
Passage	1	6.88	5.06	3.13	1.42	20	14.50	11.00	16.50	32.00
Dummy	1	5.50	3.13	3.00	0.58	20	14.50	12.00	7.00	12.70

Levers	Quantity	Length (in.)	Width (in.)	Height (In.)	Wt.(lbs.)	Quantity	Length	Width (in.)	Height (In.)	Wt.(lbs.)
Single Cylinder	1	3.88	3.44	2.56	0.88	12	14.00	12.63	3.50	16.40
Double Cylinder	1	3.88	3.44	2.56	1.46	12	14.00	12.63	3.50	21.70
One-Sided	1	3.88	3.44	2.56	0.61	12	14.00	12.63	3.50	9.30

**TERMS AND
CONDITIONS OF SALE**

Standard terms are 2% prompt payment discount for payment within 25 days from date of invoice; net 30 days from the date of invoice. Safe Lock by Kwikset® reserves the right to charge and recover on invoices which are not paid within the above terms, a service charge of 1-1/2% a month for each month or fraction thereof during which the invoice remains unpaid, said service charge, however, not to exceed the highest applicable legal rate of interest. All orders, whether solicited or written by our sales representatives or forwarded by our customers are deemed to be mere offers to purchase in accordance with these Terms and Conditions of Sale until actually accepted by us at our home office in Lake Forest, CA. We reserve the right to refuse any order as well as the right to sell or not sell to any firm at our sole discretion. The acceptance of an order is expressly made conditional upon your assent to these Terms and Conditions of Sale. We object to the inclusion of any different or additional terms or conditions, even if the same are included in your order, a contract of sale will result upon the Terms and Conditions of Sale stated herein only. Prices reflected in this book apply to Wholesale customers only.

All sales are final.

PRICES

Pricing based on full-case quantities only; orders for less than full case will be automatically adjusted up to the next full-case quantity. All prices are subject to change without notice and are not guaranteed. All taxes, duties or other charges are the responsibility of the customer.

CLAIMS

Price claims must be submitted in writing to Safe Lock by Kwikset, 19701 Davinci, Lake Forest, CA 92610 within 30 days from the date of invoice.

CHANGES OR CANCELLATIONS

Beyond 5 working days of our acknowledgement date no changes can be made. Additions to an order will be handled as a separate order and must meet applicable minimum order requirements. Order cancellation on regular stock items only, or any portion thereof is allowed only upon prior written consent from Safe Lock by Kwikset, and the payment of cancellation charges deemed appropriate.

MINIMUM CHARGE

No order will be invoiced for less than \$100.00 net plus shipping charges except for lock accessory parts.

MINIMUM ANNUAL SALES VOLUME

The company reserves the right to discontinue direct sales to any customer who does not meet the minimum annual sales volume requirement. The current annual requirement is \$50,000.00. Your annual purchases are determined by accepted, non-cancelled, and shipped orders received during each calendar year. Safe Lock by Kwikset reserves the right to change any or all minimum annual sales volume requirements at any time. Any customer who does not meet the annual sales volume requirements may continue to purchase Safe Lock by Kwikset products through a Safe Lock by Kwikset distributor.

RETURNS

Defective merchandise returned to our factories requires prior written authorization from a Safe Lock by Kwikset Sales Rep or the Sales Office. A factory return authorization must accompany the returned shipment. The return authorization must include an itemized listing of the merchandise and an explanation stating the reason for return.

FREIGHT

All goods are invoiced FOB to our factory. Upon delivery of shipments to the carrier, title to, and the risk of loss or damage in transit for such shipments, passes to our customer. Safe Lock by Kwikset's standard policy is to pay freight charges on all orders over \$1,000.00 net invoice value to a single destination in the continental U. S., by carrier and route of our choice. Shipments less than these quantities will not be shipped on a prepaid basis. If higher freight charges are incurred from customers specifying a carrier or route of their choice the additional cost will be added to that customer's invoice.

DELIVERY CONDITIONS

Shipping schedules are our best estimates, and cannot be guaranteed. Safe Lock by Kwikset is not responsible for any direct or consequential loss or damage resulting from an inability or delay in meeting shipping schedules.

**SAFE LOCK BY KWIKSET LIMITED
WARRANTIES**

Safe Lock by Kwikset products are backed by one of the most comprehensive warranty programs available. You can feel confident that with the purchase of Safe Lock by Kwikset you have selected the best quality product, backed by the best customer service available.

MECHANICAL LIMITED WARRANTY

Except as otherwise provided below, Spectrum Brands, Inc., for its Kwikset® brand products ("Safe Lock by Kwikset"), warrants to the original residential purchaser (the "Purchaser") that each Safe Lock by Kwikset product (the "Product(s)" or "Safe Lock by Kwikset Product(s)") will be free from mechanical defects under normal use from the date of purchase for as long as said Purchaser occupies the residential premises upon which the Product was originally installed ("Warranty Period"). This Mechanical Limited Warranty applies only to Products that were purchased from Safe Lock by Kwikset or a Safe Lock by Kwikset authorized seller, unless otherwise prohibited by law. Safe Lock by Kwikset Products are legitimately sold only by authorized sellers who are required to follow Safe Lock by Kwikset's policies, procedures, and quality control standards. Safe Lock by Kwikset reserves the right to reject warranty claims from purchasers for Products purchased from unauthorized sellers, including unauthorized Internet sites.

FINISH LIMITED WARRANTY

The finish on Safe Lock by Kwikset Products is protected by a durable topcoat designed to maintain the beauty and quality of the Safe Lock by Kwikset Product. Safe Lock by Kwikset warrants to the Purchaser that the finish of the Product shall be free of defects in material and workmanship from tarnishing, flaking, and discoloring from the date of purchase for as long as said Purchaser occupies the residential premises upon which the Product was originally installed ("Warranty Period"). This Finish Limited Warranty applies only to Products that were purchased from Safe Lock by Kwikset or a Safe Lock by Kwikset authorized seller, unless otherwise prohibited by law. Safe Lock by Kwikset Products are legitimately sold only by authorized sellers who are required to follow Safe Lock by Kwikset's policies, procedures, and quality control standards. Safe Lock by Kwikset reserves the right to reject warranty claims from purchasers for Products purchased from unauthorized sellers, including unauthorized Internet sites.

EXCLUSIONS FROM WARRANTY

1. Any Safe Lock by Kwikset Product produced prior to January 1, 2006.¹
2. Any Safe Lock by Kwikset Product which has been damaged as a result of installation contrary to any of Safe Lock by Kwikset's written installation instructions is not covered by these warranties.
3. Any Safe Lock by Kwikset Product which has been modified by any non-Safe Lock by Kwikset component is not covered by these warranties.
4. Any Safe Lock by Kwikset Product having a defect caused by neglect, misuse, abuse or unreasonable or extraordinary use or maintenance, including use in a commercial application, is not covered by these warranties.
5. Any Safe Lock by Kwikset Product having a defect due to use of paints, solvents, or other chemicals is not covered by these warranties.
6. Any Safe Lock by Kwikset Product that is used in combination with knobs, levers, or trim of other than those manufactured by Safe Lock by Kwikset and designated for use with the applicable locks or latches is not covered by these warranties.
7. Any Safe Lock by Kwikset Product that was purchased from an unauthorized seller is not covered by these warranties.

These warranties are not transferable. Therefore, no transferee is covered by these warranties.

¹ Safe Lock by Kwikset Products produced prior to January 1, 2006, may be eligible for warranty in accordance with the terms and conditions of the applicable warranty program.

WARRANTY CLAIMS

If you wish to make a warranty claim based upon a Product defect, please call us at 1-800-327-LOCK (5625) or contact us at Kwikset.com/support.

Please note that you will be required to provide a description of any claimed defect(s) and a dated receipt or other proof of purchase from Safe Lock by Kwikset or the Safe Lock by Kwikset authorized seller, to verify warranty eligibility.

Certain claimed defect(s) covered by these warranties may be resolved by Safe Lock by Kwikset providing you with troubleshooting steps.

Other claimed defect(s) covered by these warranties may require Product replacement. Products may not be returned to Safe Lock by Kwikset without prior authorization from Safe Lock by Kwikset. If authorized by Safe Lock by Kwikset, you will need to mail your Product to:

Spectrum Brands, Inc.
ATTN: Kwikset Consumer Services
19701 Da Vinci
Lake Forest, CA 92610
A prepaid shipping label will be provided to you.

REMEDIES

For certain claimed defect(s) covered by these warranties, as determined by Safe Lock by Kwikset, Safe Lock by Kwikset will provide you with troubleshooting steps.

For other claimed defect(s) covered by these warranties, as determined by Safe Lock by Kwikset, Safe Lock by Kwikset will replace the defective Product or part.

If a Safe Lock by Kwikset Product, which is the same as the Safe Lock by Kwikset Product or any part covered by these warranties, has been discontinued at the time of replacement or if Safe Lock by Kwikset determines, in its sole discretion, that such replacement is inappropriate, Safe Lock by Kwikset reserves the right to substitute an alternative product. Safe Lock by Kwikset also reserves the right to accept or reject an alternative product proposed as a replacement, when the value is higher than that of the Product originally purchased by the Purchaser. Except as expressly provided in these warranties to the contrary, SAFE LOCK BY KWIKSET SHALL NOT BE OBLIGATED OR LIABLE FOR LABOR OR OTHER COSTS RELATED TO INSTALLATION, REPAIR OR REPLACEMENT OF A SAFE LOCK BY KWIKSET PRODUCT, OR FOR LOSS OF, OR DAMAGE TO ANY MATERIAL WHICH IS NOT SOLD BY SAFE LOCK BY KWIKSET.

PATENT INDEMNITY

We agree to defend any suit or proceeding brought against our customer so far as based on claim that our products, or any part thereof, made solely to our specifications and furnished to our customer constitute an infringement of any U.S. patent, if notified promptly in writing and given authority, information and assistance at our expense for the defense of same, and we shall pay all damages and costs awarded therein against our customer. In case our products, or any part thereof, is in such suit held to constitute infringement and their use is enjoined, we will, at our expense and discretion, either procure for our customer the right to continue using the products or replace same with non-infringing products, or modify them so they become non-infringing, or remove such products and refund the purchase price (less depreciation, prorated from the purchase date). The foregoing states our entire liability for patent infringement by our products or any part thereof.

STANDARDS

Safe Lock by Kwikset meets or exceeds the testing requirements specified for each product grade or rating.

- American National Standards Institute (ANSI)
- Builders Hardware Manufacturers Association (BHMA)
- Underwriters Laboratories, Inc. (UL)
- ADA (Americans with Disabilities Act)

MISCELLANEOUS

Substitution of non-Safe Lock by Kwikset components/parts, and any alteration or modification of factory parts, and other lock manufacturer's parts may result in door hardware which does not function properly or will fail and will void all warranties. Orders not specified with keying requirements will be shipped Keyed Differently (KD). Orders with keying requirements of K10 or more must have a "Letter of Release" on file with Safe Lock by Kwikset stating that Safe Lock by Kwikset Corporation will not be held liable for cost and expense arising from any loss or damage to property utilizing Safe Lock by Kwikset products where 10 or more locks have been keyed alike. Contact your Sales Office account representative for a copy of the release form. Safe Lock by Kwikset reserves the right to revise or modify products, product information, or pricing without notice. Product specifications and pricing reflect available information at the time of printing. Safe Lock by Kwikset is not responsible for typographic or printing errors.

Available Finishes



11P
Venetian
Bronze



15
Satin
Nickel



26D
Satin
Chrome



26
Polished
Chrome



514
Matte
Black